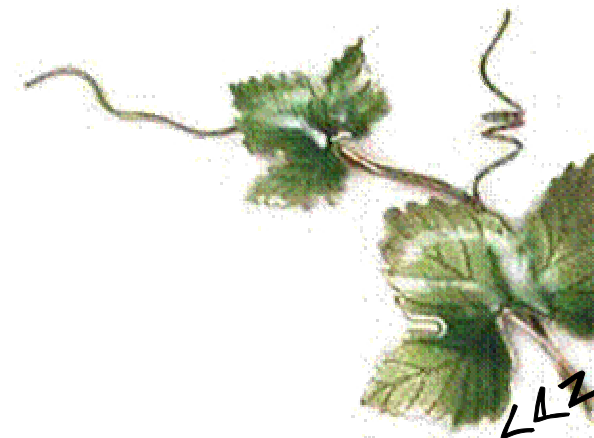




Mendoza

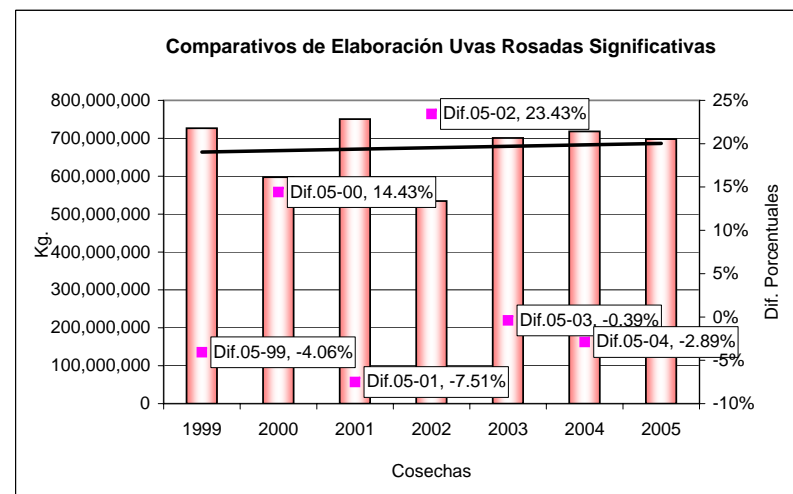
Uvas Rosadas

Totales para elaboración por variedades representativas
Distribución departamental



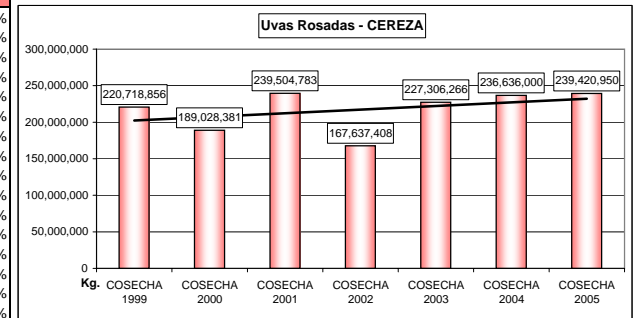
Años de Cosecha (Valores expresados en Kg.)							
VARIEDAD	1999	2000	2001	2002	2003	2004	2005
CEREZA	220,718,856	189,028,381	239,504,783	167,637,408	227,306,266	236,636,000	239,420,950
CRIOLLA GRANDE	371,717,949	308,473,289	387,516,052	267,056,539	379,978,049	379,498,145	354,188,489
MOSCATEL ROSADO	116,134,905	84,031,901	104,763,377	87,322,177	79,896,781	87,591,015	90,544,022
OTRAS VARIETADES	17,841,042	15,810,523	18,653,592	12,452,096	13,582,329	14,510,287	13,885,794
TOTAL	726,412,752	597,344,094	750,437,804	534,468,220	700,763,425	718,235,447	698,039,255

Diferencias de Cosechas						
VARIEDAD	Dif.05-99	Dif.05-00	Dif.05-01	Dif.05-02	Dif.05-03	Dif.05-04
CEREZA	7.81%	21.05%	-0.04%	29.98%	5.06%	1.16%
CRIOLLA GRANDE	-4.95%	12.91%	-9.41%	24.60%	-7.28%	-7.15%
MOSCATEL ROSADO	-28.26%	7.19%	-15.70%	3.56%	11.76%	3.26%
OTRAS VARIETADES	-28.48%	-13.86%	-34.34%	10.32%	2.19%	-4.50%
TOTAL	-4.06%	14.43%	-7.51%	23.43%	-0.39%	-2.89%

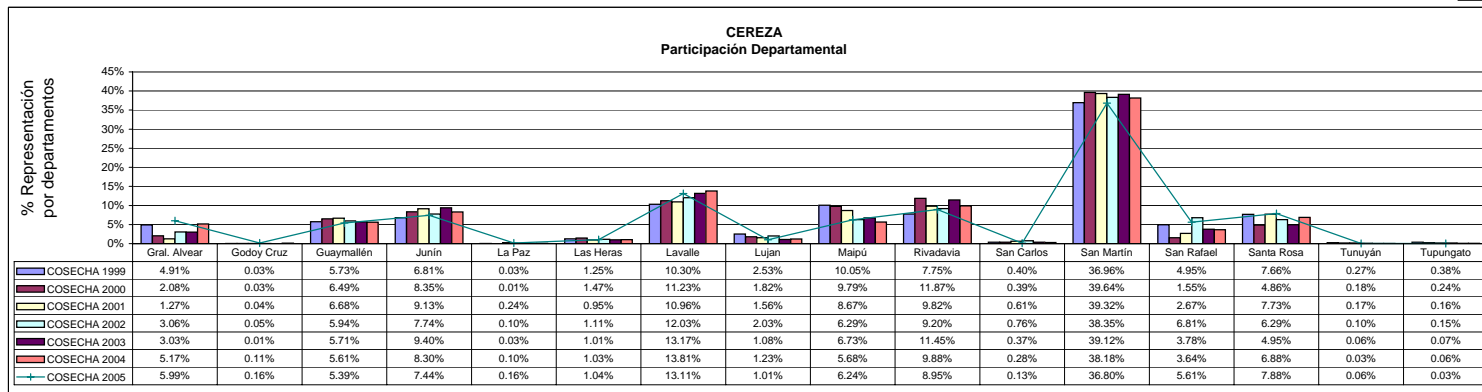
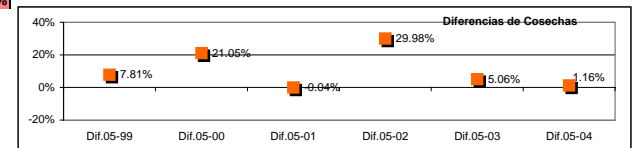


UVAS ROSADAS SIGNIFICATIVAS
 Comparativo Cosechas 2005 - 2004 - 2003 - 2002 - 2001 - 2000 - 1999
 Totales para Elaboración Provincia de Mendoza

DEPARTAMENTOS	COSECHA 1999		COSECHA 2000		COSECHA 2001		COSECHA 2002		COSECHA 2003		COSECHA 2004		COSECHA 2005	
	Kg.	%V	Kg.	%V	Kg.	%V	Kg.	%V	Kg.	%V	Kg.	%V	Kg.	%V
Gral. Alvear	10,831,542	4.91%	3,923,335	2.08%	3,046,741	1.27%	5,125,563	3.06%	6,898,642	3.03%	12,227,299	5.17%	14,339,277	5.99%
Godoy Cruz	68,280	0.03%	58,740	0.03%	85,210	0.04%	78,700	0.05%	31,090	0.01%	254,750	0.11%	386,190	0.16%
Guaymallén	12,644,030	5.73%	12,270,147	6.49%	16,007,293	6.68%	9,956,346	5.94%	12,979,411	5.71%	13,284,774	5.61%	12,909,002	5.39%
Junín	15,022,914	6.81%	15,785,805	8.35%	21,873,901	9.13%	12,973,324	7.74%	21,372,915	9.40%	19,645,517	8.30%	17,811,188	7.44%
La Paz	60,630	0.03%	20,670	0.01%	574,880	0.24%	170,400	0.10%	75,700	0.03%	228,030	0.10%	373,040	0.16%
Las Heras	2,755,100	1.25%	2,777,800	1.47%	2,272,080	0.95%	1,863,170	1.11%	2,303,710	1.01%	2,446,350	1.03%	2,480,220	1.04%
Lavalle	22,725,430	10.30%	21,226,835	11.23%	26,249,402	10.96%	20,168,727	12.03%	29,944,430	13.17%	32,669,355	13.81%	31,378,706	13.11%
Luján	5,590,120	2.53%	3,431,070	1.82%	3,735,640	1.56%	3,404,120	2.03%	2,455,390	1.08%	2,914,640	1.23%	2,425,010	1.01%
Maipú	22,179,581	10.05%	18,509,529	9.79%	20,774,245	8.67%	10,544,614	6.29%	15,301,292	6.73%	13,438,988	5.68%	14,940,415	6.24%
Rivadavia	17,099,757	7.75%	22,444,659	11.87%	23,511,510	9.82%	15,414,574	9.20%	26,032,361	11.45%	23,383,180	9.88%	21,431,444	8.95%
San Carlos	874,440	0.40%	744,340	0.39%	1,471,020	0.61%	1,281,400	0.76%	845,930	0.37%	658,910	0.28%	308,490	0.13%
San Martín	81,588,298	36.96%	74,924,367	39.64%	94,172,453	39.32%	64,285,571	38.35%	88,920,268	39.12%	90,338,204	38.18%	88,116,789	36.80%
San Rafael	10,931,860	4.95%	2,922,545	1.55%	6,403,994	2.67%	11,411,270	6.81%	8,600,687	3.78%	8,624,740	3.64%	13,437,809	5.61%
Santa Rosa	16,897,984	7.66%	9,189,469	4.86%	18,519,754	7.73%	10,547,229	6.29%	11,254,520	4.95%	16,289,853	6.88%	18,862,780	7.88%
Tunuyán	599,420	0.27%	341,090	0.18%	414,620	0.17%	162,020	0.10%	127,360	0.06%	78,300	0.03%	141,710	0.06%
Tupungato	849,470	0.38%	457,980	0.24%	392,040	0.16%	250,380	0.15%	162,560	0.07%	153,110	0.06%	78,480	0.03%
TOTAL	220,718,856	100%	189,028,381	100%	239,504,783	100%	167,637,408	100%	227,306,266	100%	236,636,000	100%	239,420,950	100%



Diferencias Totales de Cosechas					
Dif.05-99	Dif.05-00	Dif.05-01	Dif.05-02	Dif.05-03	Dif.05-04
7.81%	21.05%	-0.04%	29.98%	5.06%	1.16%



CEREZA

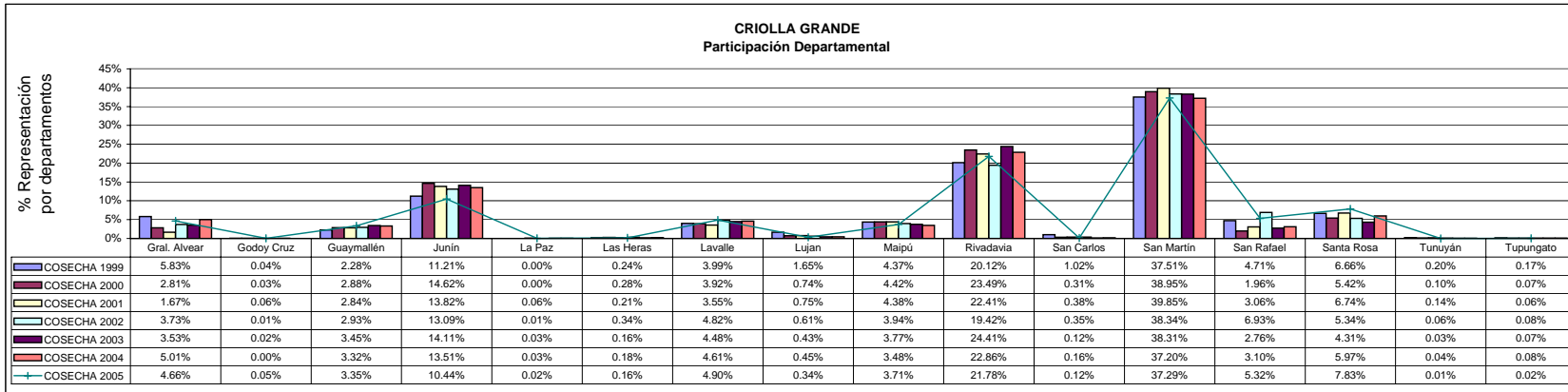
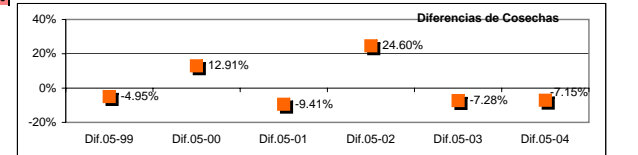
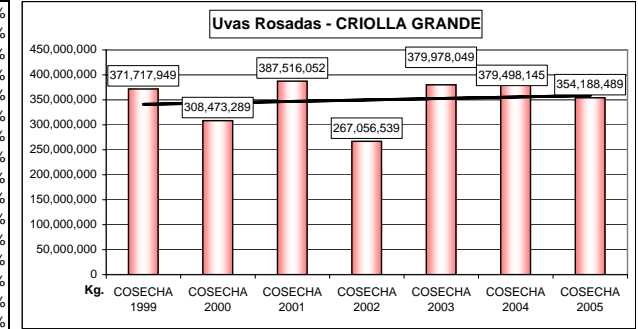
Uvas Rosadas

Comparativos Cosecha 2005 - 2004 - 2003 - 2002 - 2001 - 2000 - 1999

Totales para Elaboración por Departamentos y Participación en el Total Provincial

DEPARTAMENTOS	COSECHA 1999		COSECHA 2000		COSECHA 2001		COSECHA 2002		COSECHA 2003		COSECHA 2004		COSECHA 2005	
	Kg.	%V	Kg.	%V	Kg.	%V	Kg.	%V	Kg.	%V	Kg.	%V	Kg.	%V
Gral. Alvear	21,681,503	5.83%	8,671,760	2.81%	6,463,139	1.67%	9,972,902	3.73%	13,418,206	3.53%	19,005,517	5.01%	16,510,162	4.66%
Godoy Cruz	140,770	0.04%	78,627	0.03%	229,939	0.06%	30,060	0.01%	86,320	0.02%	0	0.00%	159,550	0.05%
Guaymallén	8,470,726	2.28%	8,876,156	2.88%	10,994,256	2.84%	7,832,073	2.93%	13,100,632	3.45%	12,602,497	3.32%	11,877,712	3.35%
Junín	41,682,190	11.21%	45,112,213	14.62%	53,569,950	13.82%	34,966,232	13.09%	53,612,804	14.11%	51,261,702	13.51%	36,986,178	10.44%
La Paz		0.00%	2,880	0.00%	235,650	0.06%	17,298	0.01%	122,336	0.03%	118,120	0.03%	85,450	0.02%
Las Heras	908,450	0.24%	857,236	0.28%	824,420	0.21%	906,950	0.34%	604,050	0.16%	692,010	0.18%	551,690	0.16%
Lavalle	14,828,437	3.99%	12,105,790	3.92%	13,738,470	3.55%	12,869,543	4.82%	17,021,444	4.48%	17,484,627	4.61%	17,348,580	4.90%
Lujan	6,130,380	1.65%	2,294,000	0.74%	2,917,780	0.75%	1,633,229	0.61%	1,630,430	0.43%	1,716,145	0.45%	1,211,830	0.34%
Maipú	16,228,417	4.37%	13,631,446	4.42%	16,985,824	4.38%	10,530,855	3.94%	14,343,960	3.77%	13,223,554	3.48%	13,150,926	3.71%
Rivadavia	74,782,285	20.12%	72,448,618	23.49%	86,852,666	22.41%	51,852,082	19.42%	92,757,613	24.41%	86,759,123	22.86%	77,124,713	21.78%
San Carlos	3,800,385	1.02%	967,840	0.31%	1,478,280	0.38%	936,900	0.35%	452,870	0.12%	595,250	0.16%	408,920	0.12%
San Martín	139,431,017	37.51%	120,144,352	38.95%	154,443,053	39.85%	102,385,497	38.34%	145,552,086	38.31%	141,168,970	37.20%	132,091,555	37.29%
San Rafael	17,500,519	4.71%	6,045,151	1.96%	11,865,422	3.06%	18,497,014	6.93%	10,505,423	2.76%	11,747,588	3.10%	18,825,372	5.32%
Santa Rosa	24,750,950	6.66%	16,720,410	5.42%	26,116,403	6.74%	14,259,834	5.34%	16,375,555	4.31%	22,651,072	5.97%	27,727,881	7.83%
Tunuyán	739,870	0.20%	315,820	0.10%	557,550	0.14%	161,920	0.06%	117,810	0.03%	149,710	0.04%	48,750	0.01%
Tupungato	642,050	0.17%	200,990	0.07%	243,250	0.06%	204,150	0.08%	276,510	0.07%	322,260	0.08%	79,220	0.02%
TOTAL	371,717,949	100%	308,473,289	100%	387,516,052	100%	267,056,539	100%	379,978,049	100%	379,498,145	100%	354,188,489	100%

Diferencias Totales de Cosechas					
Dif.05-99	Dif.05-00	Dif.05-01	Dif.05-02	Dif.05-03	Dif.05-04
-4.95%	12.91%	-9.41%	24.60%	-7.28%	-7.15%



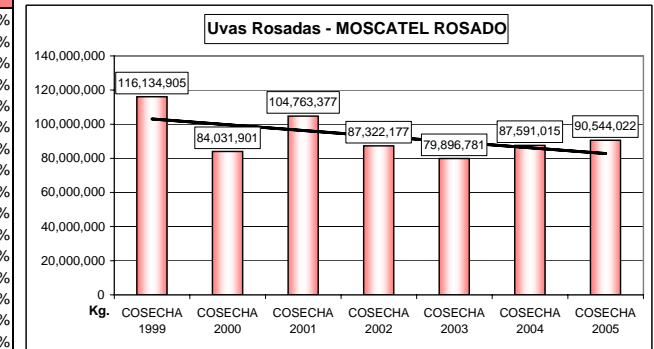
CRIOLLA GRANDE

Uvas Rosadas

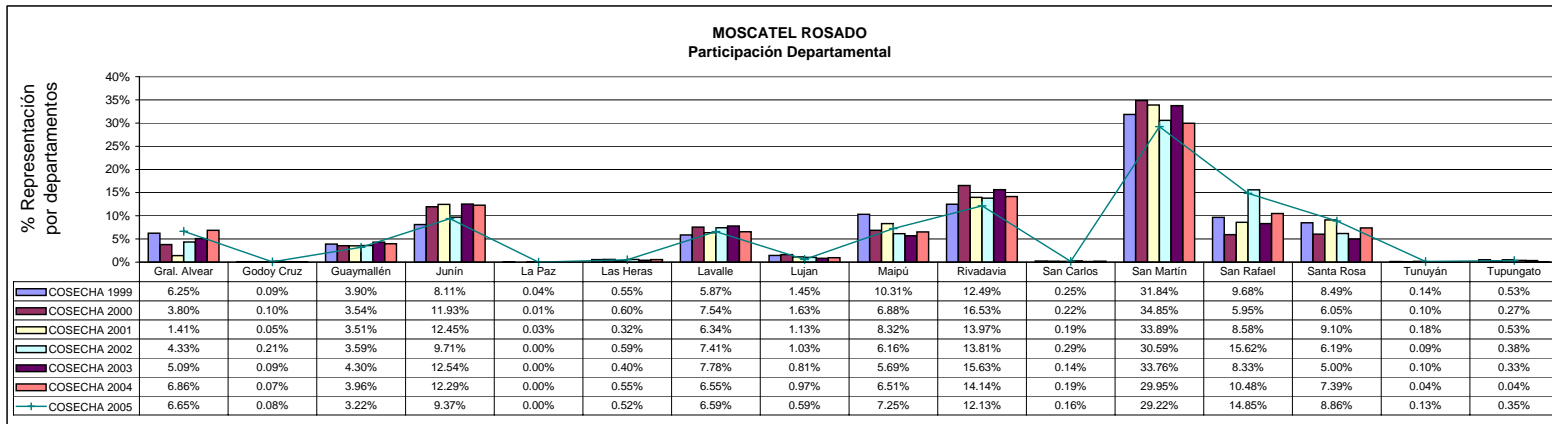
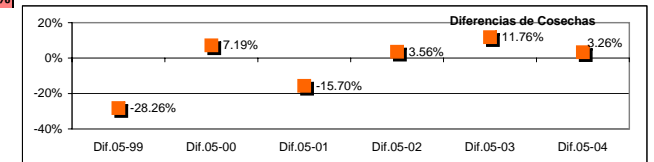
Comparativos Cosecha 2005 - 2004 - 2003 - 2002 - 2001 - 2000 - 1999

Totales para Elaboración por Departamentos y Participación en el Total Provincial

DEPARTAMENTOS	COSECHA 1999		COSECHA 2000		COSECHA 2001		COSECHA 2002		COSECHA 2003		COSECHA 2004		COSECHA 2005	
	Kg.	%V	Kg.	%V	Kg.	%V	Kg.	%V	Kg.	%V	Kg.	%V	Kg.	%V
Gral. Alvear	7,254,105	6.25%	3,196,595	3.80%	1,476,435	1.41%	3,784,606	4.33%	4,064,976	5.09%	6,009,535	6.86%	6,021,621	6.65%
Godoy Cruz	106,930	0.09%	80,160	0.10%	56,880	0.05%	185,720	0.21%	70,900	0.09%	65,050	0.07%	76,950	0.08%
Guaymallén	4,524,381	3.90%	2,973,385	3.54%	3,677,488	3.51%	3,131,515	3.59%	3,435,420	4.30%	3,471,550	3.96%	2,918,260	3.22%
Junín	9,418,627	8.11%	10,028,380	11.93%	13,040,092	12.45%	8,479,310	9.71%	10,019,136	12.54%	10,766,890	12.29%	8,487,097	9.37%
La Paz	50,770	0.04%	12,070	0.01%	27,420	0.03%	1,590	0.00%	0.00%	0.00%	0.00%	0.00%	3,920	0.00%
Las Heras	643,310	0.55%	506,060	0.60%	337,980	0.32%	511,980	0.59%	318,050	0.40%	480,160	0.55%	469,180	0.52%
Lavalle	6,820,346	5.87%	6,338,456	7.54%	6,643,479	6.34%	6,473,231	7.41%	6,218,850	7.78%	5,733,777	6.55%	5,970,644	6.59%
Lujan	1,684,120	1.45%	1,369,760	1.63%	1,181,557	1.13%	902,226	1.03%	650,343	0.81%	851,840	0.97%	533,080	0.59%
Maipú	11,978,460	10.31%	5,777,912	6.88%	8,716,546	8.32%	5,377,719	6.16%	4,550,121	5.69%	5,701,967	6.51%	6,567,845	7.25%
Rivadavia	14,506,486	12.49%	13,891,568	16.53%	14,636,749	13.97%	12,057,931	13.81%	12,484,990	15.63%	12,389,355	14.14%	10,984,235	12.13%
San Carlos	295,560	0.25%	183,150	0.22%	194,680	0.19%	253,020	0.29%	111,120	0.14%	168,610	0.19%	146,830	0.16%
San Martín	36,975,655	31.84%	29,284,609	34.85%	35,502,746	33.89%	26,713,387	30.59%	26,973,746	33.76%	26,231,668	29.95%	26,460,381	29.22%
San Rafael	11,241,294	9.68%	4,996,946	5.95%	8,991,625	8.58%	13,636,502	15.62%	6,656,431	8.33%	9,178,353	10.48%	13,447,818	14.85%
Santa Rosa	9,863,351	8.49%	5,085,070	6.05%	9,533,140	9.10%	5,402,910	6.19%	3,996,495	5.00%	6,469,220	7.39%	8,018,561	8.86%
Tunuyán	161,300	0.14%	87,620	0.10%	187,560	0.18%	81,740	0.09%	83,650	0.10%	36,370	0.04%	121,360	0.13%
Tupungato	610,210	0.53%	224,160	0.27%	559,000	0.53%	328,790	0.38%	262,553	0.33%	36,670	0.04%	316,240	0.35%
TOTAL	116,134,905	100%	84,031,901	100%	104,763,377	100%	87,322,177	100%	79,896,781	100%	87,591,015	100%	90,544,022	100%



Diferencias Totales de Cosechas					
Dif.05-99	Dif.05-00	Dif.05-01	Dif.05-02	Dif.05-03	Dif.05-04
-28.26%	7.19%	-15.70%	3.56%	11.76%	3.26%



MOSCATEL ROSADO

Uvas Rosadas

Comparativos Cosecha 2005 - 2004 - 2003 - 2002 - 2001 - 2000 - 1999

Totales para Elaboración por Departamentos y Participación en el Total Provincial