



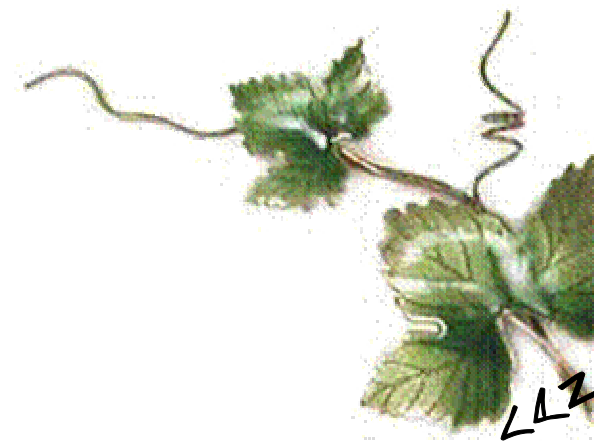
# Mendoza

---

## Uvas Tintas

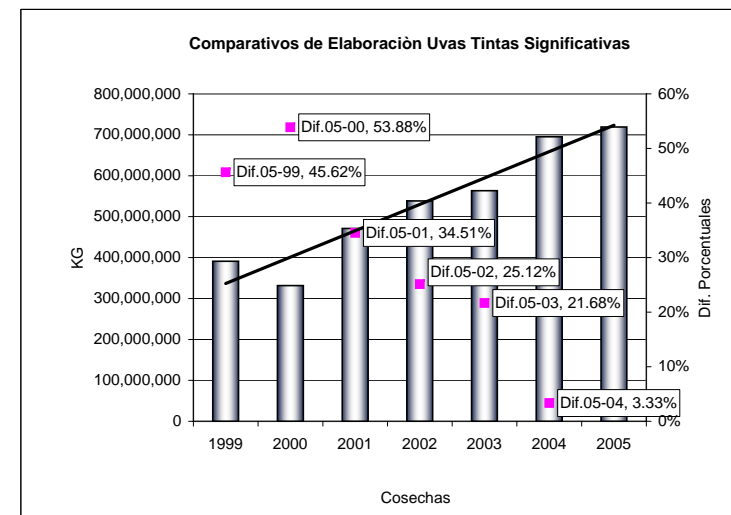
---

Totales para elaboración por variedades representativas  
Distribución departamental



VARIEDAD	Años de Cosecha (Valores Expresados en Kg)						
	1999	2000	2001	2002	2003	2004	2005
BONARDA	136,361,438	106,536,212	153,861,112	152,936,068	177,140,518	200,534,006	205,508,501
CABERNET SAUVIGNON	33,919,839	32,796,263	49,433,973	68,158,596	65,611,018	91,029,766	100,636,132
MALBEC	69,945,307	49,360,134	78,865,292	108,003,326	108,930,799	155,893,824	141,709,568
MERLOT	22,224,081	20,934,745	32,741,796	43,008,305	43,655,636	54,024,674	57,521,998
SANGIOVESE	28,310,500	31,389,776	33,613,138	32,309,399	29,846,300	29,369,505	27,289,428
SYRAH	20,269,451	23,468,379	38,547,830	51,190,412	56,305,300	72,573,710	88,387,218
TEMPRANILLO	43,359,654	35,039,305	46,790,997	46,758,348	48,045,642	52,630,692	59,697,455
OTRAS VARIEDADES	36,733,778	32,143,871	37,157,440	36,146,936	33,778,914	39,198,415	38,455,392
<b>TOTAL</b>	<b>391,124,048</b>	<b>331,668,685</b>	<b>471,011,578</b>	<b>538,511,390</b>	<b>563,314,127</b>	<b>695,254,592</b>	<b>719,205,692</b>

VARIEDAD	Diferencias de Cosechas					
	Dif.05-99	Dif.05-00	Dif.05-01	Dif.05-02	Dif.05-03	Dif.05-04
BONARDA	33.65%	48.16%	25.13%	25.58%	13.80%	2.42%
CABERNET SAUVIGNON	66.29%	67.41%	50.88%	32.27%	34.80%	9.55%
MALBEC	50.64%	65.17%	44.35%	23.79%	23.13%	-10.01%
MERLOT	61.36%	63.61%	43.08%	25.23%	24.11%	6.08%
SANGIOVESE	-3.74%	-15.03%	-23.17%	-18.40%	-9.37%	-7.62%
SYRAH	77.07%	73.45%	56.39%	42.08%	36.30%	17.89%
TEMPRANILLO	27.37%	41.31%	21.62%	21.67%	19.52%	11.84%
OTRAS VARIEDADES	4.48%	16.41%	3.38%	6.00%	12.16%	-1.93%
<b>TOTAL</b>	<b>45.62%</b>	<b>53.88%</b>	<b>34.51%</b>	<b>25.12%</b>	<b>21.68%</b>	<b>3.33%</b>

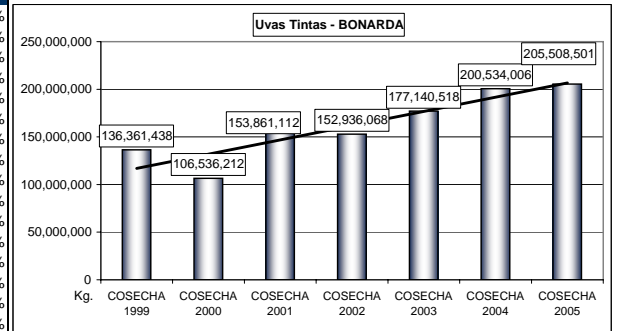


## UVAS TINTAS SIGNIFICATIVAS

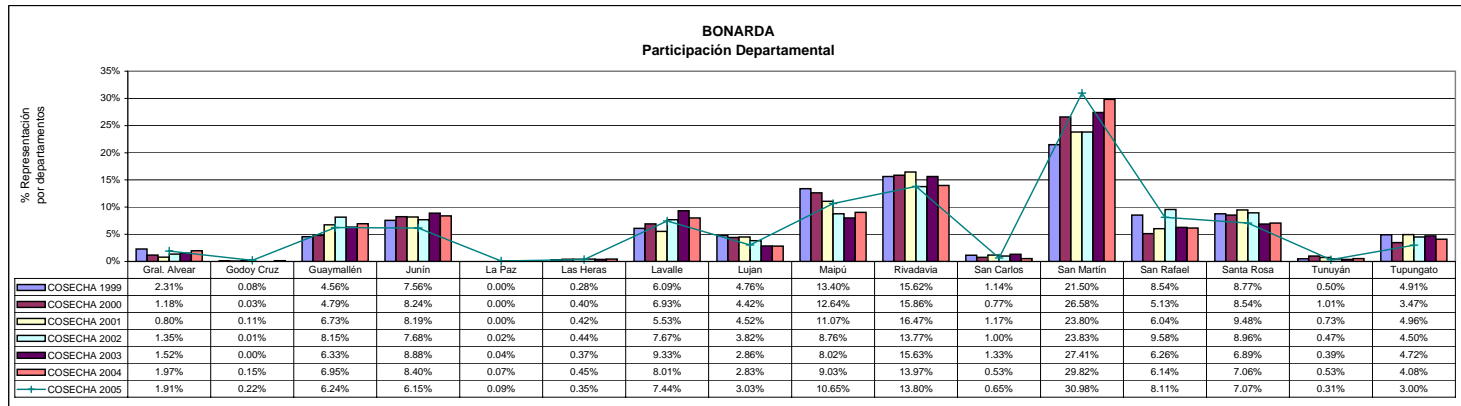
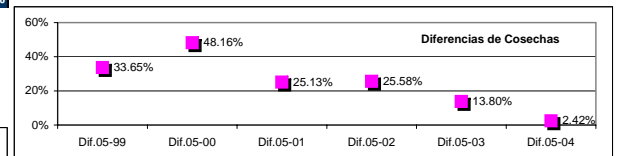
Comparativo Cosechas 2005 - 2004 - 2003 - 2002 - 2001 - 2000 - 1999

Totales para Elaboración Provincia de Mendoza

DEPARTAMENTOS	COSECHA 1999		COSECHA 2000		COSECHA 2001		COSECHA 2002		COSECHA 2003		COSECHA 2004		COSECHA 2005	
	Kg.	%V	Kg.	%V	Kg.	%V	Kg.	%V	Kg.	%V	Kg.	%V	Kg.	%V
Gral. Alvear	3,146,654	2.31%	1,258,421	1.18%	1,225,819	0.80%	2,060,993	1.35%	2,701,078	1.52%	3,951,841	1.97%	3,931,730	1.91%
Godoy Cruz	106,170	0.08%	36,870	0.03%	164,680	0.11%	12,700	0.01%	4,220	0.00%	299,512	0.15%	442,100	0.22%
Guaymallén	6,215,193	4.56%	5,103,008	4.79%	10,362,514	6.73%	12,463,469	8.15%	11,215,310	6.33%	13,928,900	6.95%	12,825,310	6.24%
Junín	10,303,283	7.56%	8,778,150	8.24%	12,595,564	8.19%	11,751,607	7.68%	15,734,996	8.88%	16,838,015	8.40%	12,647,040	6.15%
La Paz		0.00%		0.00%		0.00%	24,540	0.02%	79,080	0.04%	131,810	0.07%	181,142	0.09%
Las Heras	384,430	0.28%	427,150	0.40%	647,230	0.42%	679,660	0.44%	654,450	0.37%	905,730	0.45%	718,780	0.35%
Lavalle	8,305,850	6.09%	7,381,238	6.93%	8,501,714	5.53%	11,735,400	7.67%	16,526,530	9.33%	16,055,171	8.01%	15,285,340	7.44%
Lujan	6,485,820	4.76%	4,713,790	4.42%	6,948,545	4.52%	5,834,562	3.82%	5,061,526	2.86%	5,682,786	2.83%	6,219,844	3.03%
Maipú	18,268,598	13.40%	13,469,348	12.64%	17,036,357	11.07%	13,394,601	8.76%	14,205,713	8.02%	18,109,320	9.03%	21,881,328	10.65%
Rivadavia	21,299,723	15.62%	16,894,623	15.86%	25,334,179	16.47%	21,059,717	13.77%	27,693,169	15.63%	28,014,744	13.97%	28,349,966	13.80%
San Carlos	1,560,230	1.14%	821,470	0.77%	1,799,516	1.17%	1,527,313	1.00%	2,352,350	1.33%	1,071,460	0.53%	1,335,040	0.65%
San Martín	29,319,030	21.50%	28,315,697	26.58%	36,622,994	23.80%	36,440,235	23.83%	48,557,984	27.41%	59,798,323	29.82%	63,666,707	30.98%
San Rafael	11,640,310	8.54%	5,469,919	5.13%	9,285,915	6.04%	14,646,713	9.58%	11,086,610	6.26%	12,322,800	6.14%	16,670,970	8.11%
Santa Rosa	11,956,548	8.77%	9,094,921	8.54%	14,584,560	9.48%	13,700,998	8.96%	12,203,600	6.89%	14,162,778	7.06%	14,537,300	7.07%
Tunuyán	679,109	0.50%	1,079,360	1.01%	1,125,370	0.73%	726,290	0.47%	695,990	0.39%	1,070,966	0.53%	641,320	0.31%
Tupungato	6,690,490	4.91%	3,692,247	3.47%	7,626,155	4.96%	6,877,270	4.50%	8,367,912	4.72%	8,189,850	4.08%	6,174,584	3.00%
<b>TOTAL</b>	<b>136,361,438</b>	<b>100%</b>	<b>106,536,212</b>	<b>100%</b>	<b>153,861,112</b>	<b>100%</b>	<b>152,936,068</b>	<b>100%</b>	<b>177,140,518</b>	<b>100%</b>	<b>200,534,006</b>	<b>100%</b>	<b>205,508,501</b>	<b>100%</b>



Diferencias Totales de Cosechas					
Dif.05-99	Dif.05-00	Dif.05-01	Dif.05-02	Dif.05-03	Dif.05-04
33.65%	48.16%	25.13%	25.58%	13.80%	2.42%



**BONARDA**

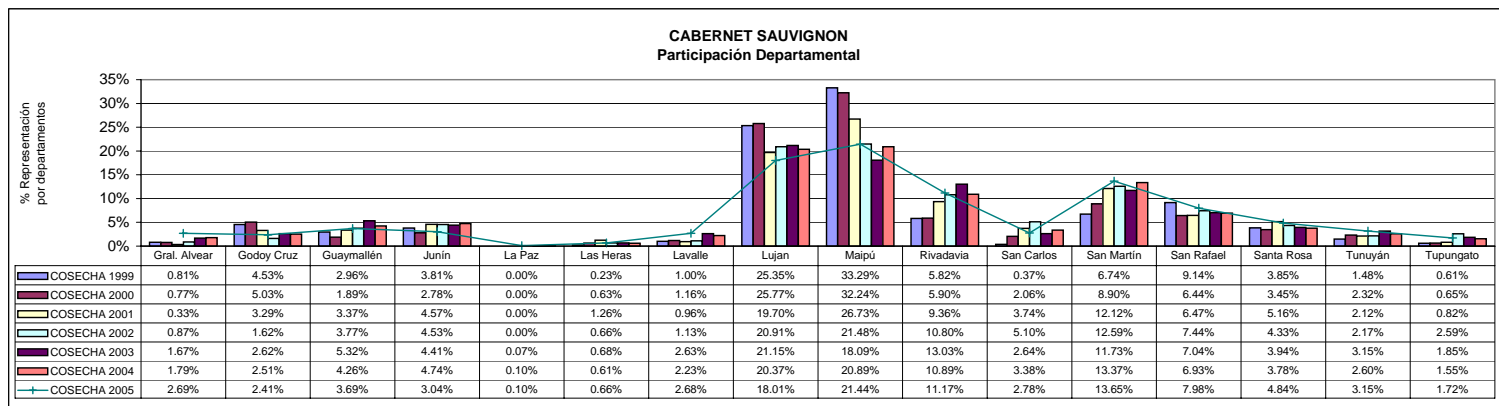
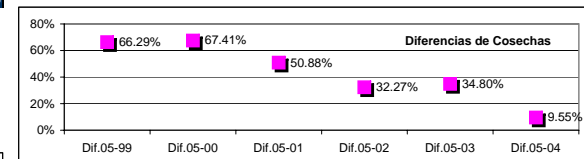
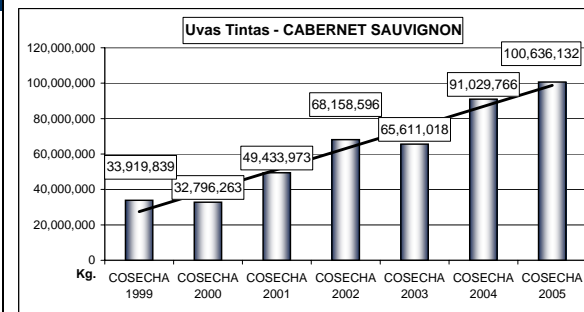
Uvas Tintas

Comparativos Cosecha 2005 - 2004 - 2003 - 2002 - 2001 - 2000 - 1999

Totales para Elaboración por Departamentos y Participación en el Total Provincial

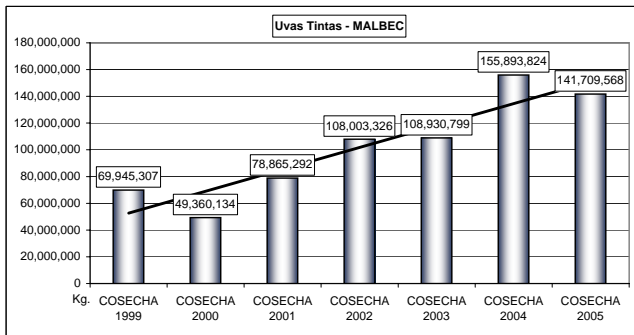
DEPARTAMENTOS	COSECHA 1999		COSECHA 2000		COSECHA 2001		COSECHA 2002		COSECHA 2003		COSECHA 2004		COSECHA 2005	
	Kg.	%V	Kg.	%V	Kg.	%V	Kg.	%V	Kg.	%V	Kg.	%V	Kg.	%V
Gral. Alvear	274,380	0.81%	252,300	0.77%	162,740	0.33%	590,263	0.87%	1,094,431	1.67%	1,628,186	1.79%	2,707,308	2.69%
Godoy Cruz	1,537,914	4.53%	1,651,100	5.03%	1,627,220	3.29%	1,106,394	1.62%	1,719,597	2.62%	2,286,612	2.51%	2,421,502	2.41%
Guaymallén	1,003,259	2.96%	620,732	1.89%	1,665,910	3.37%	2,568,423	3.77%	3,490,417	5.32%	3,874,658	4.26%	3,709,039	3.69%
Junín	1,292,089	3.81%	912,580	2.78%	2,260,320	4.57%	3,088,934	4.53%	2,891,622	4.41%	4,318,409	4.74%	3,058,520	3.04%
La Paz		0.00%		0.00%		0.00%		0.00%		0.07%	94,260	0.10%	100,410	0.10%
Las Heras	78,780	0.23%	205,958	0.63%	620,964	1.26%	451,368	0.66%	445,400	0.68%	554,760	0.61%	664,360	0.66%
Lavalle	339,030	1.00%	381,116	1.16%	473,470	0.96%	767,570	1.13%	1,726,414	2.63%	2,026,194	2.23%	2,698,680	2.68%
Lujan	8,599,721	25.35%	8,452,370	25.77%	9,737,444	19.70%	14,250,989	20.91%	13,877,734	21.15%	18,542,035	20.37%	18,122,721	18.01%
Maipú	11,293,181	33.29%	10,572,028	32.24%	13,213,696	26.73%	14,642,495	21.48%	11,866,101	18.09%	19,019,671	20.89%	21,578,056	21.44%
Rivadavia	1,973,533	5.82%	1,935,019	5.90%	4,625,629	9.36%	7,360,405	10.80%	8,548,276	13.03%	9,917,368	10.89%	11,237,730	11.17%
San Carlos	126,850	0.37%	674,020	2.06%	1,849,716	3.74%	3,476,238	5.10%	1,731,748	2.64%	3,075,731	3.38%	2,793,940	2.78%
San Martín	2,284,556	6.74%	2,918,330	8.90%	5,993,448	12.12%	8,583,365	12.59%	7,693,752	11.73%	12,167,104	13.37%	13,733,847	13.65%
San Rafael	3,101,946	9.14%	2,112,910	6.44%	3,199,967	6.47%	5,070,846	7.44%	4,617,029	7.04%	6,308,323	6.93%	8,033,665	7.98%
Santa Rosa	1,304,500	3.85%	1,132,490	3.45%	2,551,400	5.16%	2,954,350	4.33%	2,586,830	3.94%	3,438,710	3.78%	4,869,280	4.84%
Tunuyán	502,090	1.48%	760,590	2.32%	1,047,409	2.12%	1,479,233	2.17%	2,065,335	3.15%	2,362,886	2.60%	3,174,954	3.15%
Tupungato	208,010	0.61%	214,720	0.65%	404,640	0.82%	1,767,723	2.59%	1,213,212	1.85%	1,414,859	1.55%	1,732,120	1.72%
<b>TOTAL</b>	<b>33,919,839</b>	<b>100%</b>	<b>32,796,263</b>	<b>100%</b>	<b>49,433,973</b>	<b>100%</b>	<b>68,158,596</b>	<b>100%</b>	<b>65,611,018</b>	<b>100%</b>	<b>91,029,766</b>	<b>100%</b>	<b>100,636,132</b>	<b>100%</b>

Diferencias Totales de Cosechas						
	Dif.05-99	Dif.05-00	Dif.05-01	Dif.05-02	Dif.05-03	Dif.05-04
	66.29%	67.41%	50.88%	32.27%	34.80%	9.55%

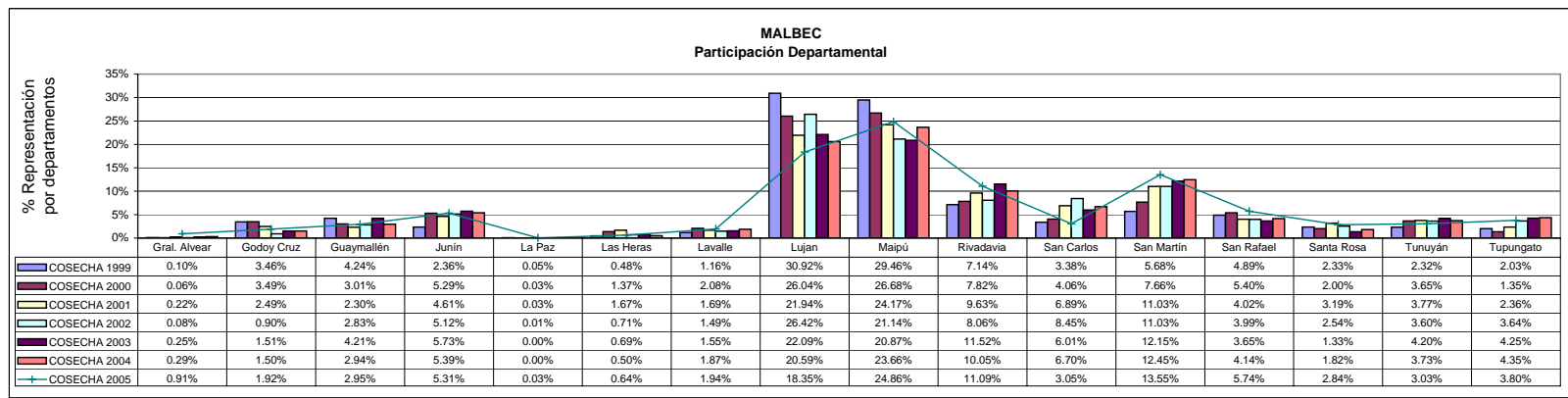
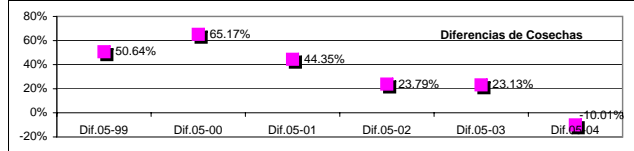


**CABERNET SAUVIGNON**  
Uvas Tintas  
Comparativos Cosecha 2005 - 2004 - 2003 - 2002 - 2001 - 2000 - 1999  
Totales para Elaboración por Departamentos y Participación en el Total Provincial

DEPARTAMENTOS	COSECHA 1999		COSECHA 2000		COSECHA 2001		COSECHA 2002		COSECHA 2003		COSECHA 2004		COSECHA 2005	
	Kg.	%V	Kg.	%V	Kg.	%V	Kg.	%V	Kg.	%V	Kg.	%V	Kg.	%V
Gral. Alvear	73,310	0.10%	28,514	0.06%	174,880	0.22%	85,720	0.08%	273,105	0.25%	452,040	0.29%	1,295,205	0.91%
Godoy Cruz	2,419,980	3.46%	1,724,910	3.49%	1,966,640	2.49%	972,458	0.90%	1,640,007	1.51%	2,339,405	1.50%	2,717,627	1.92%
Guaymallén	2,962,222	4.24%	1,485,693	3.01%	1,810,163	2.30%	3,056,314	2.83%	4,583,982	4.21%	4,589,674	2.94%	4,186,838	2.95%
Junín	1,649,190	2.36%	2,611,784	5.29%	3,632,130	4.61%	5,533,798	5.12%	6,239,453	5.73%	8,407,355	5.39%	7,526,697	5.31%
La Paz	35,320	0.05%	13,580	0.03%	23,550	0.03%	8,590	0.01%	0.00%	0.00%	6,380	0.00%	38,820	0.03%
Las Heras	338,350	0.48%	674,665	1.37%	1,316,447	1.67%	763,606	0.71%	751,710	0.69%	785,259	0.50%	900,888	0.64%
Lavalle	811,610	1.16%	1,028,290	2.08%	1,332,150	1.69%	1,606,100	1.49%	1,688,550	1.55%	2,915,080	1.87%	2,743,320	1.94%
Luján	21,624,379	30.92%	12,851,285	26.04%	17,305,705	21.94%	28,537,353	26.42%	24,063,978	22.09%	32,096,045	20.59%	26,009,672	18.35%
Maipú	20,609,003	29.46%	13,168,210	26.68%	19,063,658	24.17%	22,835,429	21.14%	22,728,615	20.87%	36,888,076	23.66%	35,227,191	24.86%
Rivadavia	4,993,512	7.14%	3,861,889	7.82%	7,593,076	9.63%	8,703,583	8.06%	12,551,629	11.52%	15,667,811	10.05%	15,716,332	11.09%
San Carlos	2,364,810	3.38%	2,005,872	4.06%	5,435,641	6.89%	9,122,286	8.45%	6,547,935	6.01%	10,448,285	6.70%	4,317,182	3.05%
San Martín	3,971,377	5.68%	3,780,582	7.66%	8,696,278	11.03%	11,908,661	11.03%	13,232,952	12.15%	19,406,513	12.45%	19,197,779	13.55%
San Rafael	3,419,012	4.89%	2,666,960	5.40%	3,168,974	4.02%	4,304,950	3.99%	3,976,980	3.65%	6,454,557	4.14%	8,129,141	5.74%
Santa Rosa	1,631,800	2.33%	988,710	2.00%	2,516,080	3.19%	2,744,722	2.54%	1,452,080	1.33%	2,834,190	1.82%	4,019,970	2.84%
Tunuyán	1,624,490	2.32%	1,802,725	3.65%	2,970,880	3.77%	3,890,942	3.60%	4,574,058	4.20%	5,818,648	3.73%	4,295,974	3.03%
Tupungato	1,416,942	2.03%	666,465	1.35%	1,859,040	2.36%	3,928,814	3.64%	4,625,765	4.25%	6,784,506	4.35%	5,386,932	3.80%
<b>TOTAL</b>	<b>69,945,307</b>	<b>100%</b>	<b>49,360,134</b>	<b>100%</b>	<b>78,865,292</b>	<b>100%</b>	<b>108,003,326</b>	<b>100%</b>	<b>108,930,799</b>	<b>100%</b>	<b>155,893,824</b>	<b>100%</b>	<b>141,709,568</b>	<b>100%</b>



Diferencias Totales de Cosechas						
	Dif.05-99	Dif.05-00	Dif.05-01	Dif.05-02	Dif.05-03	Dif.05-04
	50.64%	65.17%	44.35%	23.79%	23.13%	-10.01%



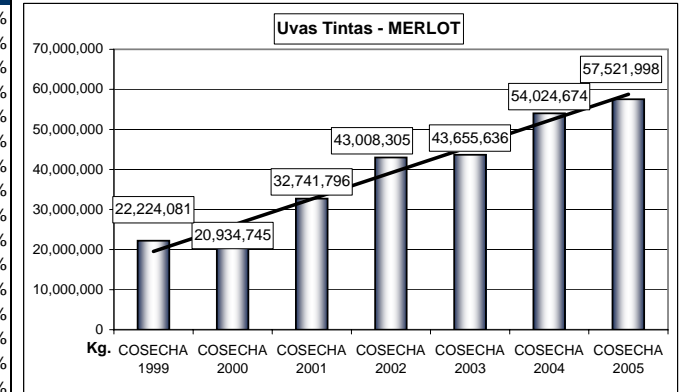
**MALBEC**

Uvas Tintas

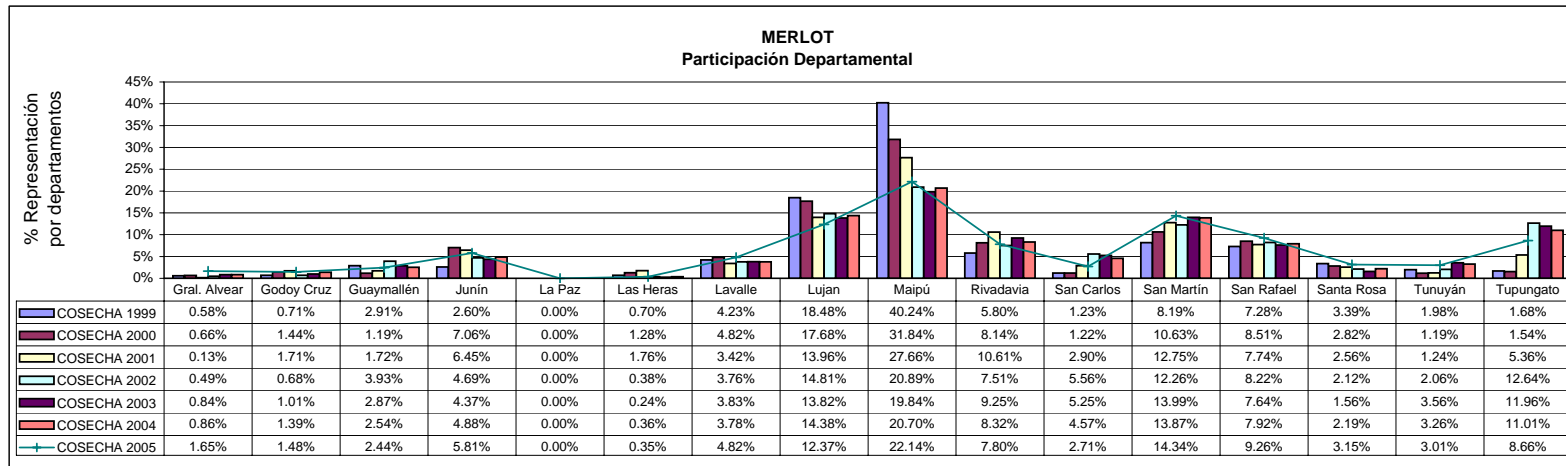
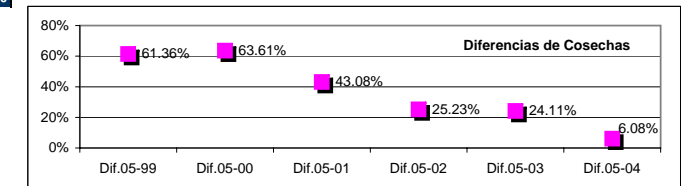
Comparativos Cosecha 2005 - 2004 - 2003 - 2002 - 2001 - 2000 - 1999

Totales para Elaboración por Departamentos y Participación en el Total Provincial

DEPARTAMENTOS	COSECHA 1999		COSECHA 2000		COSECHA 2001		COSECHA 2002		COSECHA 2003		COSECHA 2004		COSECHA 2005	
	Kg.	%V	Kg.	%V	Kg.	%V	Kg.	%V	Kg.	%V	Kg.	%V	Kg.	%V
Gral. Alvear	128,850	0.58%	139,020	0.66%	43,560	0.13%	212,750	0.49%	365,780	0.84%	464,976	0.86%	950,265	1.65%
Godoy Cruz	158,800	0.71%	301,890	1.44%	560,360	1.71%	292,810	0.68%	438,760	1.01%	748,385	1.39%	850,538	1.48%
Guaymallén	645,638	2.91%	249,474	1.19%	564,390	1.72%	1,688,611	3.93%	1,251,175	2.87%	1,369,673	2.54%	1,405,059	2.44%
Junín	578,350	2.60%	1,477,190	7.06%	2,112,790	6.45%	2,018,788	4.69%	1,905,685	4.37%	2,634,939	4.88%	3,343,296	5.81%
La Paz		0.00%		0.00%		0.00%		0.00%		0.00%		0.00%		0.00%
Las Heras	155,470	0.70%	267,920	1.28%	575,772	1.76%	164,260	0.38%	105,270	0.24%	193,160	0.36%	202,420	0.35%
Lavalle	940,500	4.23%	1,008,990	4.82%	1,118,914	3.42%	1,617,840	3.76%	1,670,330	3.83%	2,041,800	3.78%	2,772,160	4.82%
Lujan	4,106,272	18.48%	3,700,221	17.68%	4,571,934	13.96%	6,370,560	14.81%	6,033,259	13.82%	7,767,427	14.38%	7,114,647	12.37%
Maipú	8,943,659	40.24%	6,665,805	31.84%	9,057,339	27.66%	8,982,890	20.89%	8,660,405	19.84%	11,180,611	20.70%	12,734,330	22.14%
Rivadavia	1,289,485	5.80%	1,704,025	8.14%	3,472,380	10.61%	3,229,541	7.51%	4,038,506	9.25%	4,493,775	8.32%	4,488,310	7.80%
San Carlos	272,430	1.23%	255,130	1.22%	950,477	2.90%	2,392,210	5.56%	2,289,929	5.25%	2,470,441	4.57%	1,558,744	2.71%
San Martín	1,821,050	8.19%	2,224,670	10.63%	4,175,861	12.75%	5,274,424	12.26%	6,106,099	13.99%	7,490,665	13.87%	8,250,160	14.34%
San Rafael	1,618,963	7.28%	1,780,540	8.51%	2,535,540	7.74%	3,535,465	8.22%	3,333,597	7.64%	4,279,316	7.92%	5,326,368	9.26%
Santa Rosa	752,810	3.39%	589,530	2.82%	839,420	2.56%	909,890	2.12%	680,939	1.56%	1,184,810	2.19%	1,809,890	3.15%
Tunuyán	439,274	1.98%	248,350	1.19%	407,129	1.24%	883,941	2.06%	1,552,676	3.56%	1,758,789	3.26%	1,734,112	3.01%
Tupungato	372,530	1.68%	321,990	1.54%	1,755,930	5.36%	5,434,325	12.64%	5,223,226	11.96%	5,945,907	11.01%	4,981,699	8.66%
<b>TOTAL</b>	<b>22,224,081</b>	<b>100%</b>	<b>20,934,745</b>	<b>100%</b>	<b>32,741,796</b>	<b>100%</b>	<b>43,008,305</b>	<b>100%</b>	<b>43,655,636</b>	<b>100%</b>	<b>54,024,674</b>	<b>100%</b>	<b>57,521,998</b>	<b>100%</b>



Diferencias Totales de Cosechas					
Dif.05-99	Dif.05-00	Dif.05-01	Dif.05-02	Dif.05-03	Dif.05-04
61.36%	63.61%	43.08%	25.23%	24.11%	6.08%



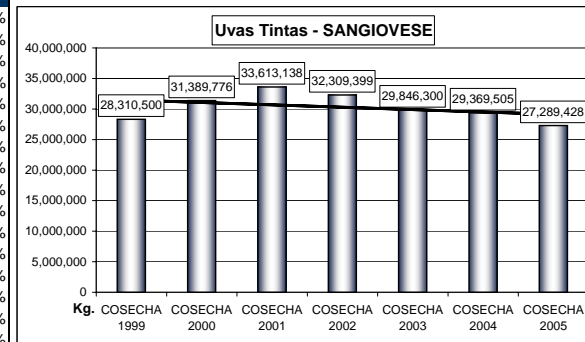
**MERLOT**

Uvas Tintas

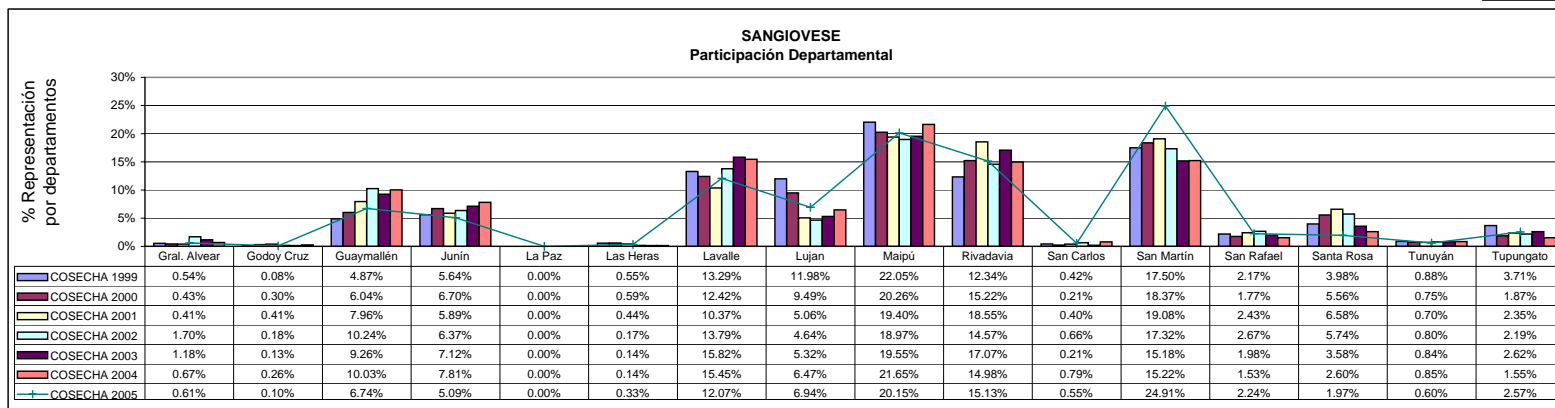
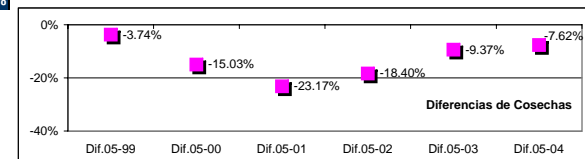
Comparativos Cosecha 2005 - 2004 - 2003 - 2002 - 2001 - 2000 - 1999

Totales para Elaboración por Departamentos y Participación en el Total Provincial

DEPARTAMENTOS	COSECHA 1999		COSECHA 2000		COSECHA 2001		COSECHA 2002		COSECHA 2003		COSECHA 2004		COSECHA 2005	
	Kg.	%V	Kg.	%V	Kg.	%V	Kg.	%V	Kg.	%V	Kg.	%V	Kg.	%V
Gral. Alvear	153,760	0.54%	135,640	0.43%	136,160	0.41%	547,950	1.70%	350,750	1.18%	197,850	0.67%	165,310	0.61%
Godoy Cruz	21,580	0.08%	93,730	0.30%	138,070	0.41%	56,580	0.18%	38,330	0.13%	76,216	0.26%	27,000	0.10%
Guaymallén	1,380,100	4.87%	1,894,413	6.04%	2,674,580	7.96%	3,309,462	10.24%	2,764,744	9.26%	2,944,562	10.03%	1,839,027	6.74%
Junín	1,595,680	5.64%	2,104,640	6.70%	1,979,728	5.89%	2,058,940	6.37%	2,126,365	7.12%	2,293,645	7.81%	1,389,660	5.09%
La Paz		0.00%		0.00%		0.00%		0.00%		0.00%		0.00%		0.00%
Las Heras	157,090	0.55%	185,450	0.59%	147,680	0.44%	54,650	0.17%	42,290	0.14%	40,290	0.14%	89,630	0.33%
Lavalle	3,763,860	13.29%	3,899,341	12.42%	3,484,450	10.37%	4,455,060	13.79%	4,722,460	15.82%	4,536,950	15.45%	3,294,550	12.07%
Lujan	3,392,359	11.98%	2,979,207	9.49%	1,699,504	5.06%	1,500,736	4.64%	1,588,260	5.32%	1,900,984	6.47%	1,893,363	6.94%
Maipú	6,241,961	22.05%	6,359,188	20.26%	6,520,189	19.40%	6,127,762	18.97%	5,835,662	19.55%	6,359,173	21.65%	5,499,296	20.15%
Rivadavia	3,492,195	12.34%	4,777,465	15.22%	6,234,914	18.55%	4,706,290	14.57%	5,095,485	17.07%	4,399,624	14.98%	4,129,700	15.13%
San Carlos	118,990	0.42%	67,360	0.21%	134,600	0.40%	214,390	0.66%	61,970	0.21%	232,420	0.79%	148,750	0.55%
San Martín	4,953,226	17.50%	5,767,527	18.37%	6,413,323	19.08%	5,595,720	17.32%	4,531,150	15.18%	4,471,442	15.22%	6,798,774	24.91%
San Rafael	615,599	2.17%	557,015	1.77%	815,330	2.43%	862,049	2.67%	591,254	1.98%	448,967	1.53%	610,860	2.24%
Santa Rosa	1,126,590	3.98%	1,746,730	5.56%	2,211,170	6.58%	1,854,140	5.74%	1,067,230	3.58%	763,700	2.60%	538,670	1.97%
Tunuyán	248,500	0.88%	235,290	0.75%	234,760	0.70%	259,120	0.80%	249,620	0.84%	249,662	0.85%	164,288	0.60%
Tupungato	1,049,010	3.71%	586,780	1.87%	788,680	2.35%	706,550	2.19%	780,730	2.62%	454,020	1.55%	700,550	2.57%
<b>TOTAL</b>	<b>28,310,500</b>	<b>100%</b>	<b>31,389,776</b>	<b>100%</b>	<b>33,613,138</b>	<b>100%</b>	<b>32,309,399</b>	<b>100%</b>	<b>29,846,300</b>	<b>100%</b>	<b>29,369,505</b>	<b>100%</b>	<b>27,289,428</b>	<b>100%</b>



Diferencias Totales de Cosechas					
Dif.05-99	Dif.05-00	Dif.05-01	Dif.05-02	Dif.05-03	Dif.05-04
-3.74%	-15.03%	-23.17%	-18.40%	-9.37%	-7.62%



**SANGIOVESE**

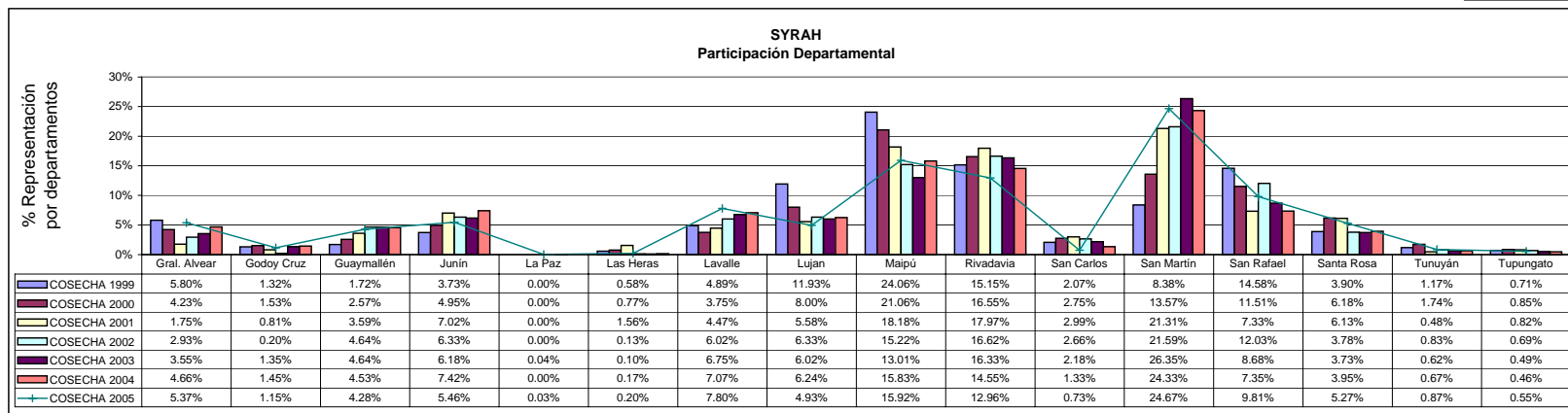
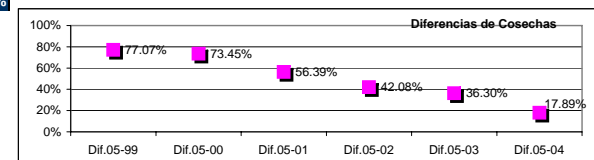
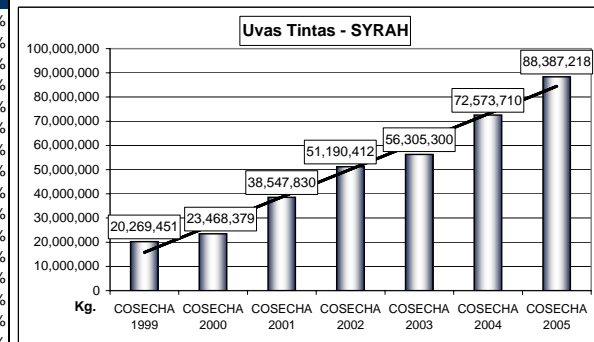
Uvas Tintas

Comparativos Cosecha 2005 - 2004 - 2003 - 2002 - 2001 - 2000 - 1999

Totales para Elaboración por Departamentos y Participación en el Total Provincial

DEPARTAMENTOS	COSECHA 1999		COSECHA 2000		COSECHA 2001		COSECHA 2002		COSECHA 2003		COSECHA 2004		COSECHA 2005	
	Kg.	%V	Kg.	%V	Kg.	%V	Kg.	%V	Kg.	%V	Kg.	%V	Kg.	%V
Gral. Alvear	1,176,385	5.80%	992,805	4.23%	675,355	1.75%	1,500,000	2.93%	1,997,126	3.55%	3,384,887	4.66%	4,750,350	5.37%
Godoy Cruz	266,820	1.32%	358,260	1.53%	312,120	0.81%	101,150	0.20%	759,526	1.35%	1,051,072	1.45%	1,015,580	1.15%
Guaymallén	348,470	1.72%	602,848	2.57%	1,383,070	3.59%	2,374,489	4.64%	2,611,324	4.64%	3,291,205	4.53%	3,783,580	4.28%
Junín	756,670	3.73%	1,161,936	4.95%	2,705,139	7.02%	3,241,643	6.33%	3,477,598	6.18%	5,383,030	7.42%	4,828,136	5.46%
La Paz		0.00%		0.00%		0.00%		0.00%	23,590	0.04%		0.00%	26,370	0.03%
Las Heras	118,150	0.58%	181,200	0.77%	601,220	1.56%	65,960	0.13%	56,490	0.10%	121,140	0.17%	175,430	0.20%
Lavalle	991,280	4.89%	881,066	3.75%	1,722,690	4.47%	3,082,500	6.02%	3,799,670	6.75%	5,130,134	7.07%	6,893,530	7.80%
Lujan	2,419,073	11.93%	1,878,467	8.00%	2,150,716	5.58%	3,239,724	6.33%	3,386,832	6.02%	4,529,415	6.24%	4,357,446	4.93%
Maipú	4,876,864	24.06%	4,941,794	21.06%	7,009,254	18.18%	7,791,965	15.22%	7,325,194	13.01%	11,484,830	15.83%	14,067,035	15.92%
Rivadavia	3,071,180	15.15%	3,883,297	16.55%	6,928,050	17.97%	8,505,661	16.62%	9,193,058	16.33%	10,559,538	14.55%	11,451,841	12.96%
San Carlos	419,650	2.07%	644,320	2.75%	1,152,130	2.99%	1,363,085	2.66%	1,229,621	2.18%	965,609	1.33%	646,618	0.73%
San Martín	1,697,976	8.38%	3,185,012	13.57%	8,214,352	21.31%	11,054,295	21.59%	14,835,234	26.35%	17,657,450	24.33%	21,806,298	24.67%
San Rafael	2,955,373	14.58%	2,700,519	11.51%	2,827,204	7.33%	6,157,712	12.03%	4,888,554	8.68%	5,334,744	7.35%	8,671,724	9.81%
Santa Rosa	789,800	3.90%	1,449,715	6.18%	2,363,950	6.13%	1,936,090	3.78%	2,099,320	3.73%	2,863,720	3.95%	4,658,627	5.27%
Tunuyán	238,100	1.17%	407,650	1.74%	186,210	0.48%	422,723	0.83%	347,884	0.62%	483,080	0.67%	768,938	0.87%
Tupungato	143,660	0.71%	199,490	0.85%	316,370	0.82%	353,415	0.69%	274,279	0.49%	333,856	0.46%	485,715	0.55%
<b>TOTAL</b>	<b>20,269,451</b>	<b>100%</b>	<b>23,468,379</b>	<b>100%</b>	<b>38,547,830</b>	<b>100%</b>	<b>51,190,412</b>	<b>100%</b>	<b>56,305,300</b>	<b>100%</b>	<b>72,573,710</b>	<b>100%</b>	<b>88,387,218</b>	<b>100%</b>

Diferencias Totales de Cosechas					
Dif.05-99	Dif.05-00	Dif.05-01	Dif.05-02	Dif.05-03	Dif.05-04
77.07%	73.45%	56.39%	42.08%	36.30%	17.89%



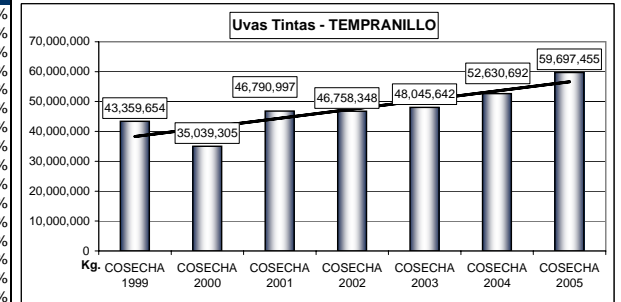
**SYRAH**

Uvas Tintas

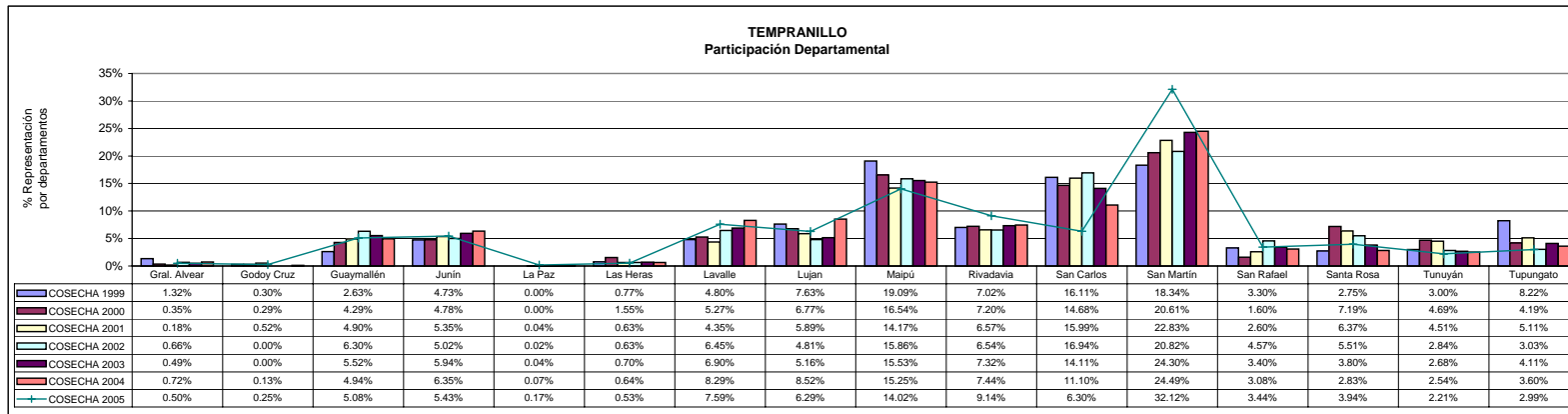
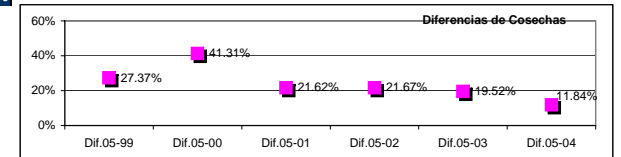
Comparativos Cosecha 2005 - 2004 - 2003 - 2002 - 2001 - 2000 - 1999

Totales para Elaboración por Departamentos y Participación en el Total Provincial

DEPARTAMENTOS	COSECHA 1999		COSECHA 2000		COSECHA 2001		COSECHA 2002		COSECHA 2003		COSECHA 2004		COSECHA 2005	
	Kg.	%V	Kg.	%V	Kg.	%V	Kg.	%V	Kg.	%V	Kg.	%V	Kg.	%V
Gral. Alvear	574,068	1.32%	121,820	0.35%	83,320	0.18%	309,360	0.66%	233,688	0.49%	381,300	0.72%	297,270	0.50%
Godoy Cruz	128,920	0.30%	103,260	0.29%	244,870	0.52%		0.00%	68,692	0.13%	152,228	0.25%		
Guaymallén	1,140,884	2.63%	1,503,033	4.29%	2,294,457	4.90%	2,945,750	6.30%	2,652,310	5.52%	2,600,994	4.94%	3,033,639	5.08%
Junín	2,051,867	4.73%	1,675,460	4.78%	2,505,150	5.35%	2,346,320	5.02%	2,853,215	5.94%	3,341,045	6.35%	3,242,675	5.43%
La Paz		0.00%		0.00%	19,470	0.04%	8,240	0.02%	20,440	0.04%	37,150	0.07%	99,010	0.17%
Las Heras	333,160	0.77%	544,480	1.55%	293,830	0.63%	292,980	0.63%	337,460	0.70%	338,050	0.64%	313,550	0.53%
Lavalle	2,080,249	4.80%	1,845,150	5.27%	2,036,066	4.35%	3,017,910	6.45%	3,313,950	6.90%	4,361,885	8.29%	4,532,990	7.59%
Lujan	3,307,299	7.63%	2,372,017	6.77%	2,755,244	5.89%	2,247,838	4.81%	2,478,771	5.16%	4,485,558	8.52%	3,752,211	6.29%
Maipú	8,276,889	19.09%	5,795,660	16.54%	6,629,364	14.17%	7,417,666	15.86%	7,463,342	15.53%	8,027,149	15.25%	8,369,760	14.02%
Rivadavia	3,043,738	7.02%	2,524,275	7.20%	3,073,000	6.57%	3,055,903	6.54%	3,516,440	7.32%	3,915,710	7.44%	5,455,570	9.14%
San Carlos	6,983,990	16.11%	5,142,150	14.68%	7,480,457	15.99%	7,921,574	16.94%	6,780,556	14.11%	5,840,147	11.10%	3,761,599	6.30%
San Martín	7,951,435	18.34%	7,222,450	20.61%	10,680,811	22.83%	9,736,297	20.82%	11,674,265	24.30%	12,889,303	24.49%	19,175,834	32.12%
San Rafael	1,431,107	3.30%	560,320	1.60%	1,215,708	2.60%	2,137,110	4.57%	1,632,690	3.40%	1,623,170	3.08%	2,050,830	3.44%
Santa Rosa	1,191,130	2.75%	2,519,230	7.19%	2,978,440	6.37%	2,577,690	5.51%	1,825,010	3.80%	1,489,370	2.83%	2,354,540	3.94%
Tunuyán	1,300,130	3.00%	1,642,130	4.69%	2,110,720	4.51%	1,326,180	2.84%	1,289,000	2.68%	1,334,399	2.54%	1,318,009	2.21%
Tupungato	3,564,788	8.22%	1,467,870	4.19%	2,390,090	5.11%	1,417,530	3.03%	1,974,505	4.11%	1,896,770	3.60%	1,787,740	2.99%
<b>TOTAL</b>	<b>43,359,654</b>	<b>100%</b>	<b>35,039,305</b>	<b>100%</b>	<b>46,790,997</b>	<b>100%</b>	<b>46,758,348</b>	<b>100%</b>	<b>48,045,642</b>	<b>100%</b>	<b>52,630,692</b>	<b>100%</b>	<b>59,697,455</b>	<b>100%</b>



Diferencias Totales de Cosechas					
Dif. 05-99	Dif. 05-00	Dif. 05-01	Dif. 05-02	Dif. 05-03	Dif. 05-04
27.37%	41.31%	21.62%	21.67%	19.52%	11.84%



**TEMPRANILLO**

Uvas Tintas

Comparativos Cosecha 2005 - 2004 - 2003 - 2002 - 2001 - 2000 - 1999

Totales para Elaboración por Departamentos y Participación en el Total Provincial