



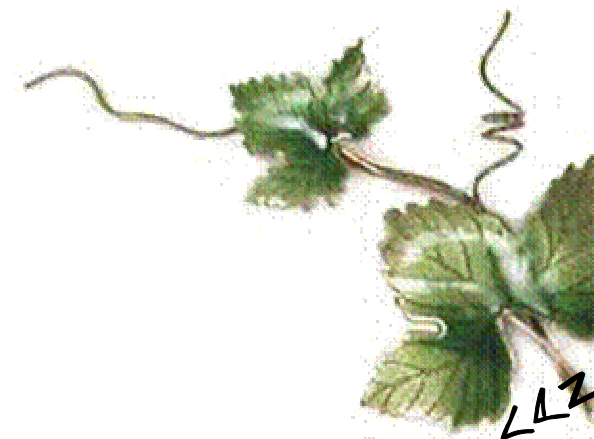
# Mendoza

---

## Uvas Rosadas

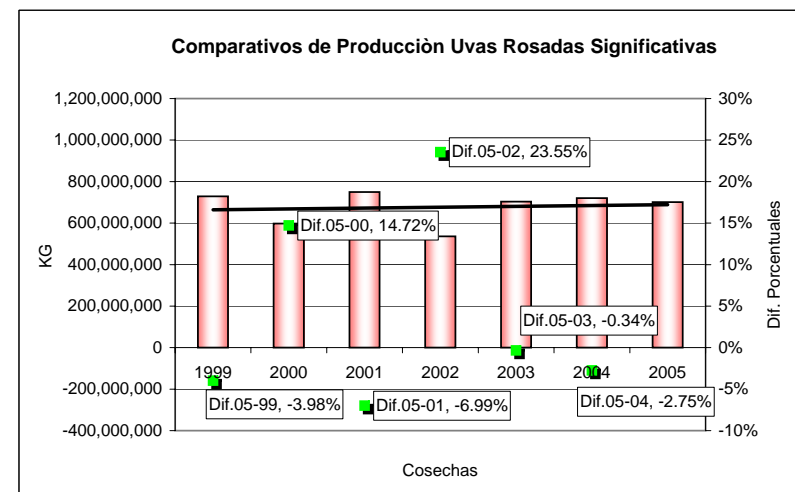
---

Totales producidos por variedades representativas  
Distribución departamental



Años de Cosecha (Valores expresados en Kg.)							
VARIEDAD	1999	2000	2001	2002	2003	2004	2005
CEREZA	221,046,985	187,807,183	237,553,618	166,694,909	227,148,794	235,601,341	239,486,549
CRIOLLA GRANDE	371,909,949	308,749,017	387,494,082	267,055,029	380,012,869	379,730,615	354,238,189
MOSCATEL ROSADO	117,273,598	84,705,539	105,658,705	88,438,226	80,915,227	88,345,787	91,063,992
OTRAS VARIETADES	18,460,272	16,381,572	19,069,004	13,593,688	15,072,963	16,370,633	16,005,054
<b>TOTAL</b>	<b>728,690,804</b>	<b>597,643,311</b>	<b>749,775,409</b>	<b>535,781,852</b>	<b>703,149,853</b>	<b>720,048,376</b>	<b>700,793,784</b>

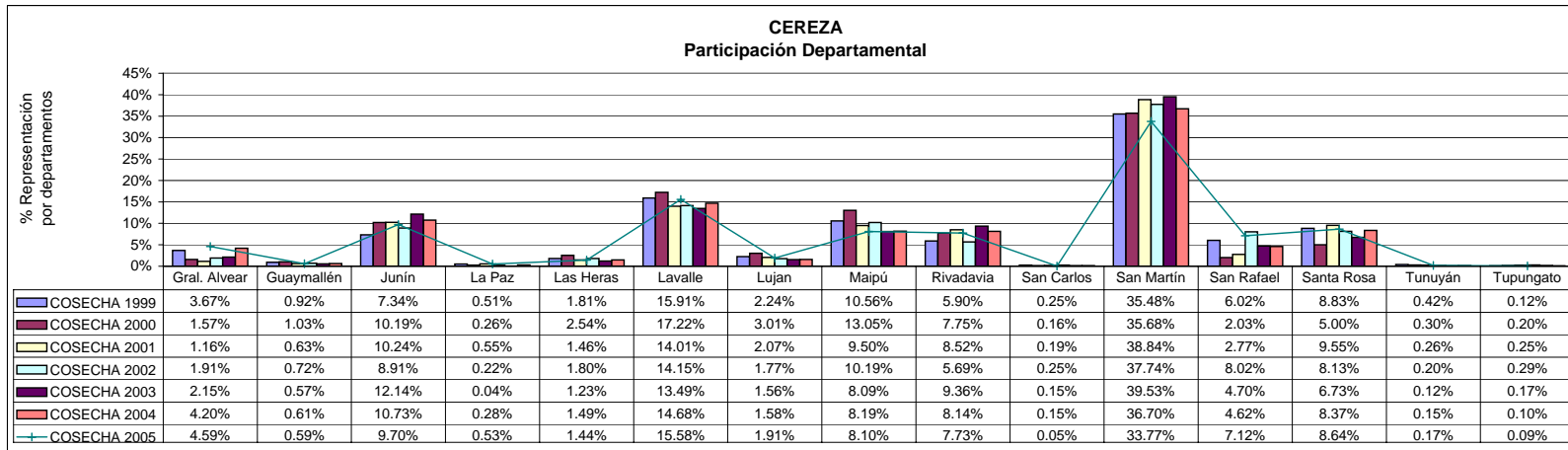
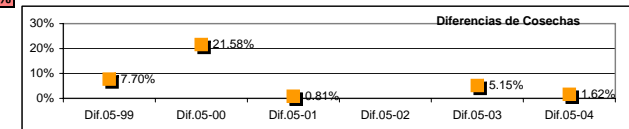
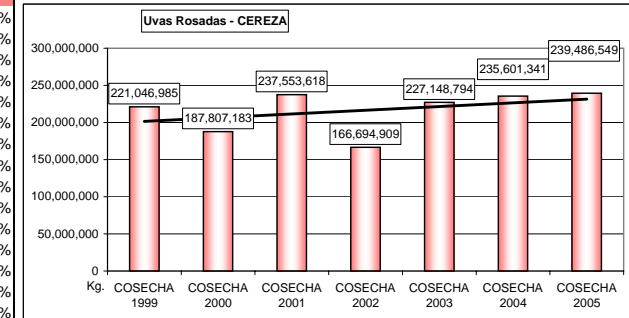
Diferencias de Cosechas						
VARIEDAD	Dif.05-99	Dif.05-00	Dif.05-01	Dif.05-02	Dif.05-03	Dif.05-04
CEREZA	7.70%	21.58%	0.81%	30.39%	5.15%	1.62%
CRIOLLA GRANDE	-4.99%	12.84%	-9.39%	24.61%	-7.28%	-7.20%
MOSCATEL ROSADO	-28.78%	6.98%	-16.03%	2.88%	11.14%	2.98%
OTRAS VARIETADES	-15.34%	-2.35%	-19.14%	15.07%	5.82%	-2.28%
<b>TOTAL</b>	<b>-3.98%</b>	<b>14.72%</b>	<b>-6.99%</b>	<b>23.55%</b>	<b>-0.34%</b>	<b>-2.75%</b>



**UVAS ROSADAS SIGNIFICATIVAS**  
 Comparativo Cosechas 2005 - 2004 - 2003 - 2002 - 2001 - 2000 - 1999  
 Totales Producidos Provincia de Mendoza

DEPARTAMENTOS	COSECHA 1999		COSECHA 2000		COSECHA 2001		COSECHA 2002		COSECHA 2003		COSECHA 2004		COSECHA 2005	
	Kg.	%V	Kg.	%V	Kg.	%V	Kg.	%V	Kg.	%V	Kg.	%V	Kg.	%V
Gral. Alvear	8,123,367	3.67%	2,953,360	1.57%	2,754,708	1.16%	3,184,843	1.91%	4,873,762	2.15%	9,900,996	4.20%	10,985,472	4.59%
Guaymallén	2,036,161	0.92%	1,927,025	1.03%	1,505,380	0.63%	1,195,530	0.72%	1,291,586	0.57%	1,441,076	0.61%	1,408,630	0.59%
Junín	16,229,693	7.34%	19,142,906	10.19%	24,331,720	10.24%	14,855,846	8.91%	27,572,198	12.14%	25,291,081	10.73%	23,240,240	9.70%
La Paz	1,135,160	0.51%	495,340	0.26%	1,297,930	0.55%	368,770	0.22%	81,800	0.04%	660,760	0.28%	1,268,810	0.53%
Las Heras	3,996,929	1.81%	4,778,696	2.54%	3,467,829	1.46%	3,006,020	1.80%	2,784,703	1.23%	3,511,910	1.49%	3,450,630	1.44%
Lavalle	35,170,125	15.91%	32,338,940	17.22%	33,277,602	14.01%	23,584,482	14.15%	30,635,754	13.49%	34,581,084	14.68%	37,308,246	15.58%
Luján	4,947,251	2.24%	5,645,880	3.01%	4,917,484	2.07%	2,950,575	1.77%	3,542,727	1.56%	3,725,249	1.58%	4,574,337	1.91%
Maipú	23,349,955	10.56%	24,512,253	13.05%	22,575,097	9.50%	16,989,502	10.19%	18,378,863	8.09%	19,284,158	8.19%	19,395,204	8.10%
Rivadavia	13,034,449	5.90%	14,557,764	7.75%	20,229,281	8.52%	9,477,864	5.69%	21,255,116	9.36%	19,182,970	8.14%	18,514,067	7.73%
San Carlos	553,570	0.25%	304,500	0.16%	440,420	0.19%	418,945	0.25%	332,830	0.15%	358,330	0.15%	111,630	0.05%
San Martín	78,433,510	35.48%	67,006,927	35.68%	92,267,364	38.84%	62,912,023	37.74%	89,787,537	39.53%	86,475,949	36.70%	80,867,082	33.77%
San Rafael	13,313,865	6.02%	3,820,980	2.03%	6,584,607	2.77%	13,373,314	8.02%	10,668,312	4.70%	10,878,208	4.62%	17,058,714	7.12%
Santa Rosa	19,521,420	8.83%	9,382,212	5.00%	22,689,536	9.55%	13,554,195	8.13%	15,290,236	6.73%	19,723,710	8.37%	20,686,967	8.64%
Tunuyán	930,700	0.42%	561,050	0.30%	610,400	0.26%	334,260	0.20%	261,310	0.12%	349,580	0.15%	410,490	0.17%
Tupungato	270,830	0.12%	379,350	0.20%	597,650	0.25%	488,740	0.29%	392,060	0.17%	236,280	0.10%	206,030	0.09%
<b>TOTAL</b>	<b>221,046,985</b>	<b>100%</b>	<b>187,807,183</b>	<b>100%</b>	<b>237,553,618</b>	<b>100%</b>	<b>166,694,909</b>	<b>100%</b>	<b>227,148,794</b>	<b>100%</b>	<b>235,601,341</b>	<b>100%</b>	<b>239,486,549</b>	<b>100%</b>

Diferencias Totales de Cosechas					
Dif.05-99	Dif.05-00	Dif.05-01	Dif.05-02	Dif.05-03	Dif.05-04
7.70%	21.58%	0.81%	30.39%	5.15%	1.62%



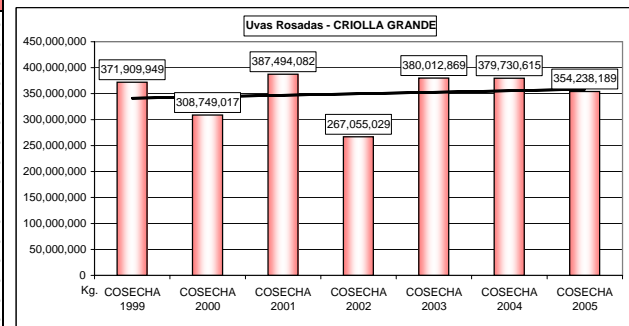
**CEREZA**

Uvas Rosadas

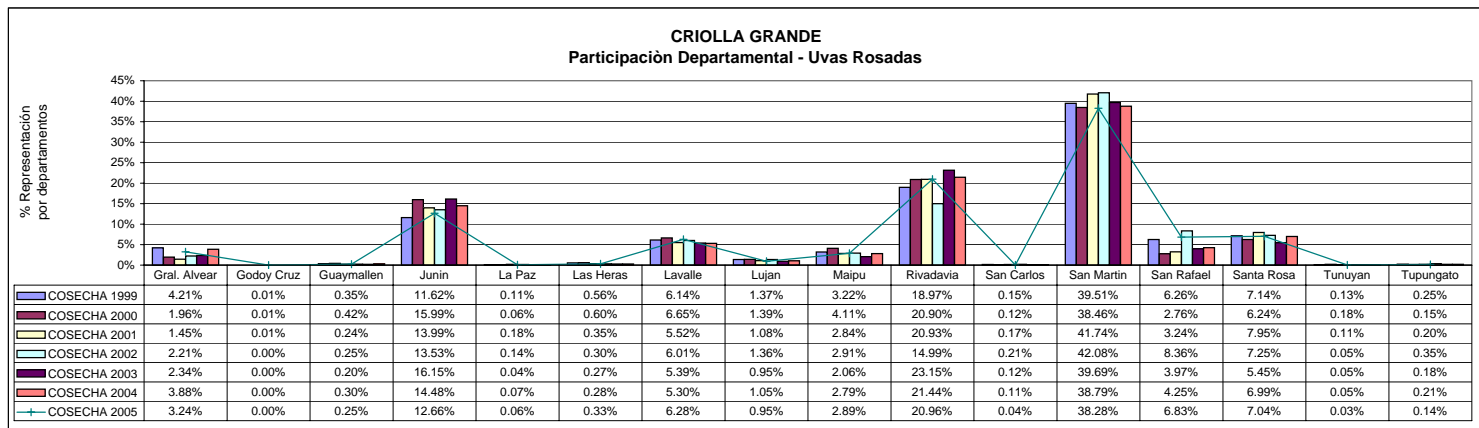
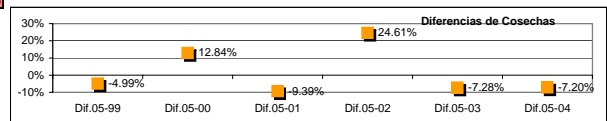
Comparativos Cosecha Años 1999 a 2005

Totales Producidos por Departamentos y Participación en el Total Provincial

DEPARTAMENTOS	COSECHA 1999		COSECHA 2000		COSECHA 2001		COSECHA 2002		COSECHA 2003		COSECHA 2004		COSECHA 2005	
	KG	%V	KG	%V	KG	%V	KG	%V	KG	%V	KG	%V	KG	%V
Gral. Alvear	15,660,914	4.21%	6,061,605	1.96%	5,609,214	1.45%	5,906,057	2.21%	8,880,115	2.34%	14,730,276	3.88%	11,478,393	3.24%
Godoy Cruz	44,160	0.01%	38,230	0.01%	31,120	0.01%	0.00%	0.00%	0.00%	0.00%	0.00%	0.00%	0.00%	0.00%
Guaymallen	1,308,463	0.35%	1,288,968	0.42%	920,570	0.24%	656,370	0.25%	755,768	0.20%	1,146,419	0.30%	892,724	0.25%
Junin	43,204,881	11.62%	49,358,469	15.99%	54,208,755	13.99%	36,142,148	13.53%	61,355,153	16.15%	54,986,907	14.48%	44,856,597	12.66%
La Paz	406,760	0.11%	175,560	0.06%	702,930	0.18%	386,488	0.14%	164,856	0.04%	276,410	0.07%	218,000	0.06%
Las Heras	2,077,200	0.56%	1,859,514	0.60%	1,366,420	0.35%	797,230	0.30%	1,022,106	0.27%	1,072,410	0.28%	1,167,182	0.33%
Lavalle	22,830,217	6.14%	20,534,921	6.65%	21,406,509	5.52%	16,038,764	6.01%	20,470,635	5.39%	20,129,713	5.30%	22,232,820	6.28%
Lujan	5,093,064	1.37%	4,299,987	1.39%	4,174,562	1.08%	3,638,095	1.36%	3,601,989	0.95%	3,976,428	1.05%	3,372,446	0.95%
Maipu	11,980,697	3.22%	12,696,704	4.11%	11,017,683	2.84%	7,777,360	2.91%	7,841,768	2.06%	10,609,277	2.79%	10,240,237	2.89%
Rivadavia	70,552,906	18.97%	64,534,551	20.90%	81,083,844	20.93%	40,032,238	14.99%	87,961,670	23.15%	81,425,114	21.44%	74,253,448	20.96%
San Carlos	564,780	0.15%	374,450	0.12%	640,290	0.17%	550,982	0.21%	454,370	0.12%	415,430	0.11%	158,460	0.04%
San Martin	146,923,932	39.51%	118,739,225	38.46%	161,756,054	41.74%	112,369,994	42.08%	150,831,864	39.69%	147,311,160	38.79%	135,606,501	38.28%
San Rafael	23,293,043	6.26%	8,508,076	2.76%	12,562,285	3.24%	22,333,239	8.36%	15,080,074	3.97%	16,127,719	4.25%	24,187,761	6.83%
Santa Rosa	26,570,942	7.14%	19,251,307	6.24%	30,805,986	7.95%	19,370,844	7.25%	20,710,571	5.45%	26,531,232	6.99%	24,949,600	7.04%
Tunuyan	485,560	0.13%	558,490	0.18%	437,780	0.11%	132,770	0.05%	187,740	0.05%	190,310	0.05%	121,640	0.03%
Tupungato	912,430	0.25%	468,960	0.15%	770,080	0.20%	922,450	0.35%	694,190	0.18%	801,810	0.21%	502,380	0.14%
<b>TOTAL</b>	<b>371,909,949</b>	<b>100%</b>	<b>308,749,017</b>	<b>100%</b>	<b>387,494,082</b>	<b>100%</b>	<b>267,055,029</b>	<b>100%</b>	<b>380,012,869</b>	<b>100%</b>	<b>379,730,615</b>	<b>100%</b>	<b>354,238,189</b>	<b>100%</b>



Diferencias Totales de Cosechas					
Dif.05-99	Dif.05-00	Dif.05-01	Dif.05-02	Dif.05-03	Dif.05-04
-4.99%	12.84%	-9.39%	24.61%	-7.28%	-7.20%



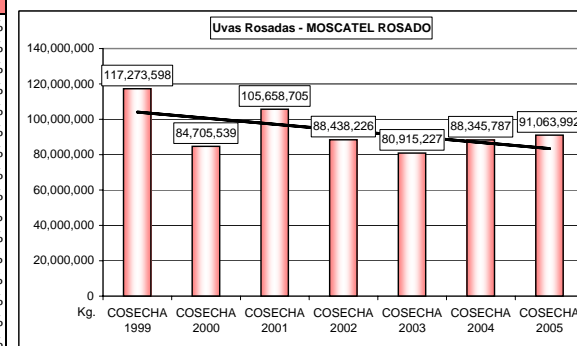
**CRIOLLA GRANDE**

Uvas Rosadas

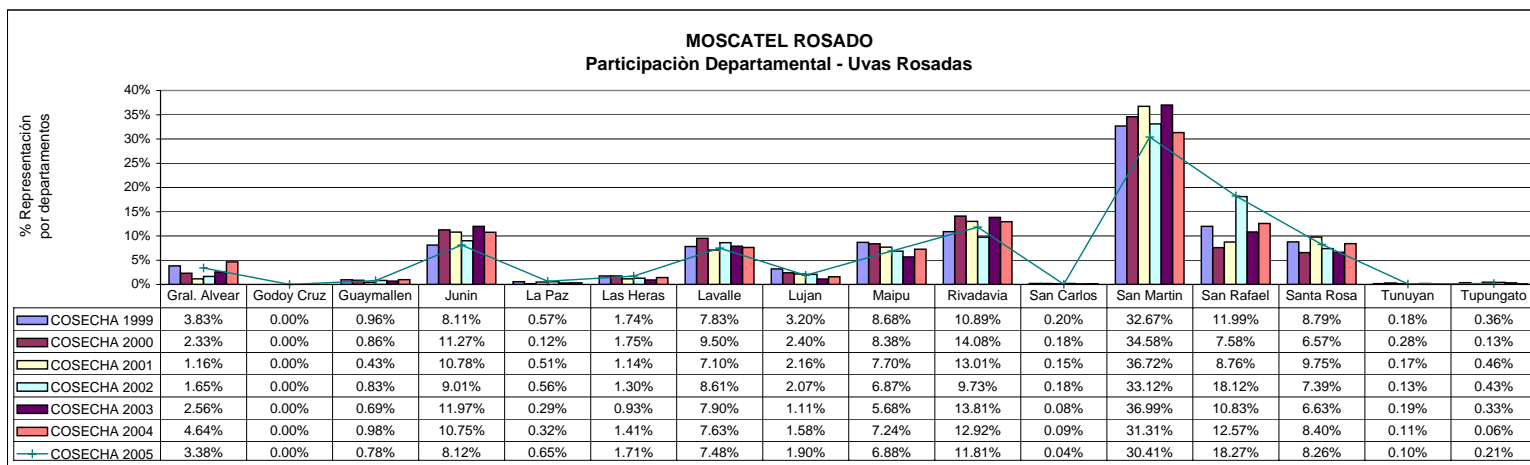
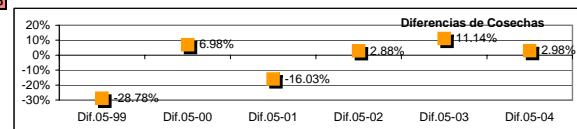
Comparativos Cosecha Años 1999 a 2005

Totales Producidos por Departamentos y Participación en el Total Provincial

DEPARTAMENTOS	COSECHA 1999		COSECHA 2000		COSECHA 2001		COSECHA 2002		COSECHA 2003		COSECHA 2004		COSECHA 2005	
	KG	%V	KG	%V	KG	%V	KG	%V	KG	%V	KG	%V	KG	%V
Gral. Alvear	4,494,030	3.83%	1,970,360	2.33%	1,224,940	1.16%	1,459,531	1.65%	2,074,768	2.56%	4,098,930	4.64%	3,080,985	3.38%
Godoy Cruz		0.00%		0.00%		0.00%		0.00%		0.00%		0.00%		0.00%
Guaymallen	1,128,408	0.96%	724,715	0.86%	456,868	0.43%	738,004	0.83%	555,998	0.69%	863,880	0.98%	707,910	0.78%
Junin	9,515,607	8.11%	9,542,197	11.27%	11,394,567	10.78%	7,971,052	9.01%	9,685,574	11.97%	9,493,814	10.75%	7,391,575	8.12%
La Paz	672,530	0.57%	103,630	0.12%	533,910	0.51%	499,290	0.56%	236,050	0.29%	281,120	0.32%	593,060	0.65%
Las Heras	2,041,216	1.74%	1,485,813	1.75%	1,208,281	1.14%	1,147,153	1.30%	751,150	0.93%	1,241,920	1.41%	1,557,185	1.71%
Lavalle	9,178,906	7.83%	8,049,787	9.50%	7,504,570	7.10%	7,614,105	8.61%	6,393,774	7.90%	6,737,267	7.63%	6,815,395	7.48%
Lujan	3,753,762	3.20%	2,029,690	2.40%	2,276,964	2.16%	1,826,253	2.07%	901,345	1.11%	1,393,395	1.58%	1,727,380	1.90%
Maipu	10,173,657	8.68%	7,096,019	8.38%	8,133,421	7.70%	6,074,526	6.87%	4,592,604	5.68%	6,400,232	7.24%	6,267,701	6.88%
Rivadavia	12,771,101	10.89%	11,928,677	14.08%	13,747,139	13.01%	8,602,085	9.73%	11,176,199	13.81%	11,415,561	12.92%	10,758,164	11.81%
San Carlos	229,320	0.20%	155,610	0.18%	156,030	0.15%	161,100	0.18%	64,700	0.08%	79,450	0.09%	32,450	0.04%
San Martin	38,312,317	32.67%	29,290,169	34.58%	38,794,481	36.72%	29,287,676	33.12%	29,930,440	36.99%	27,662,033	31.31%	27,694,375	30.41%
San Rafael	14,061,219	11.99%	6,418,182	7.58%	9,256,140	8.76%	16,027,983	18.12%	8,766,211	10.83%	11,106,769	12.57%	16,633,008	18.27%
Santa Rosa	10,306,085	8.79%	5,562,370	6.57%	10,304,348	9.75%	6,532,338	7.39%	5,366,181	6.63%	7,421,155	8.40%	7,525,844	8.26%
Tunuyan	208,240	0.18%	239,850	0.28%	176,870	0.17%	115,410	0.13%	151,720	0.19%	98,261	0.11%	88,920	0.10%
Tupungato	427,200	0.36%	108,470	0.13%	490,176	0.46%	381,720	0.43%	268,513	0.33%	52,000	0.06%	190,040	0.21%
<b>TOTAL</b>	<b>117,273,598</b>	<b>100%</b>	<b>84,705,539</b>	<b>100%</b>	<b>105,658,705</b>	<b>100%</b>	<b>88,438,226</b>	<b>100%</b>	<b>80,915,227</b>	<b>100%</b>	<b>88,345,787</b>	<b>100%</b>	<b>91,063,992</b>	<b>100%</b>



Diferencias Totales de Cosechas						
	Dif.05-99	Dif.05-00	Dif.05-01	Dif.05-02	Dif.05-03	Dif.05-04
	-28.78%	6.98%	-16.03%	2.88%	11.14%	2.98%



**MOSCATEL ROSADO**

Uvas Rosadas

Comparativos Cosecha Años 1999 a 2005

Totales Producidos por Departamentos y Participación en el Total Provincial