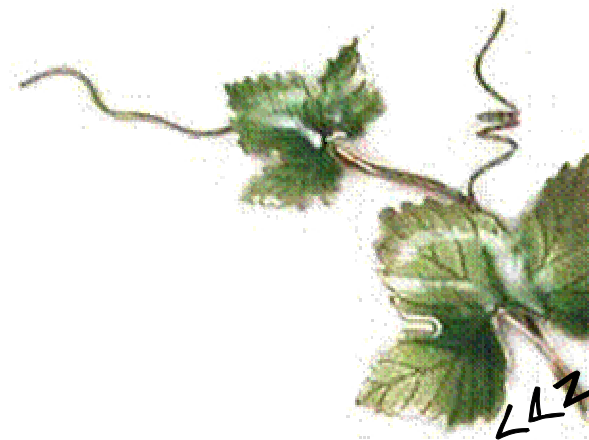




Mendoza

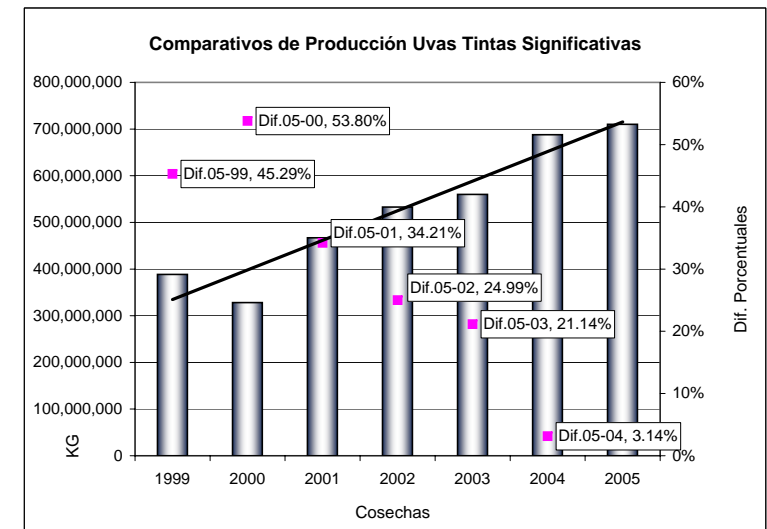
Uvas Tintas

Totales producidos por variedades representativas
Distribución departamental



VARIEDAD	Años de Cosecha (valores Expresados en Kg)						
	1999	2000	2001	2002	2003	2004	2005
BONARDA	136,015,418	106,673,422	153,519,442	152,300,953	177,009,758	200,086,424	205,158,301
CABERNET SAUVIGNON	33,315,329	31,551,686	48,424,661	66,701,601	63,794,038	87,487,338	96,405,631
MALBEC	69,522,907	49,328,592	78,727,872	107,613,289	108,627,243	154,770,100	139,928,835
MERLOT	21,726,441	20,531,715	32,217,786	42,234,952	43,177,306	53,234,531	57,190,738
SANGIOVESE	28,153,650	31,205,316	33,613,138	32,146,249	29,846,300	29,369,505	27,289,428
SYRAH	20,111,831	22,552,721	37,327,020	49,732,230	55,731,400	71,169,258	86,329,562
TEMPRANILLO	43,359,654	35,039,305	46,790,997	46,735,128	48,045,642	52,635,562	59,394,042
OTRAS VARIEDADES	36,298,091	31,234,147	36,577,448	35,241,688	33,776,284	39,122,926	38,449,085
TOTAL	388,503,321	328,116,904	467,198,364	532,706,090	560,007,971	687,875,644	710,145,622

VARIEDAD	Diferencias de Cosechas					
	Dif.05-99	Dif.05-00	Dif.05-01	Dif.05-02	Dif.05-03	Dif.05-04
BONARDA	33.70%	48.00%	25.17%	25.76%	13.72%	2.47%
CABERNET SAUVIGNON	65.44%	67.27%	49.77%	30.81%	33.83%	9.25%
MALBEC	50.32%	64.75%	43.74%	23.09%	22.37%	-10.61%
MERLOT	62.01%	64.10%	43.67%	26.15%	24.50%	6.92%
SANGIOVESE	-3.17%	-14.35%	-23.17%	-17.80%	-9.37%	-7.62%
SYRAH	76.70%	73.88%	56.76%	42.39%	35.44%	17.56%
TEMPRANILLO	27.00%	41.01%	21.22%	21.31%	19.11%	11.38%
OTRAS VARIEDADES	5.59%	18.76%	4.87%	8.34%	12.15%	-1.75%
TOTAL	45.29%	53.80%	34.21%	24.99%	21.14%	3.14%



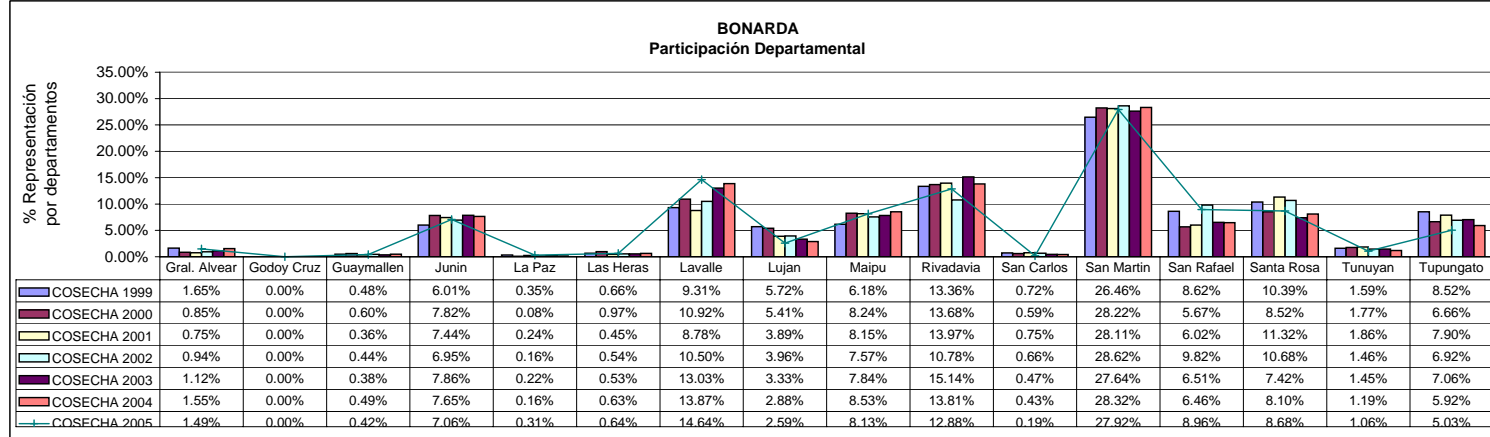
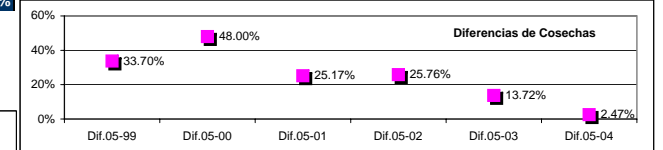
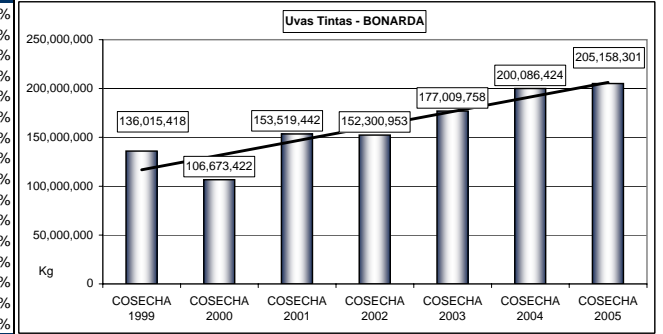
UVAS TINTAS SIGNIFICATIVAS

Comparativo Cosechas Años 1999 a 2005

Totales Producidos Provincia de Mendoza

DEPARTAMENTOS	COSECHA 1999		COSECHA 2000		COSECHA 2001		COSECHA 2002		COSECHA 2003		COSECHA 2004		COSECHA 2005	
	KG	%V	KG	%V	KG	%V	KG	%V	KG	%V	KG	%V	KG	%V
Gral. Alvear	2,241,479	1.65%	908,336	0.85%	1,157,424	0.75%	1,433,597	0.94%	1,991,243	1.12%	3,101,948	1.55%	3,054,530	1.49%
Godoy Cruz		0.00%		0.00%		0.00%		0.00%		0.00%		0.00%		0.00%
Guaymallen	647,886	0.48%	637,241	0.60%	558,470	0.36%	671,961	0.44%	665,336	0.38%	974,060	0.49%	870,760	0.42%
Junin	8,168,348	6.01%	8,342,885	7.82%	11,423,057	7.44%	10,589,467	6.95%	13,912,451	7.86%	15,314,459	7.65%	14,488,884	7.06%
La Paz	470,030	0.35%	85,370	0.08%	367,740	0.24%	245,070	0.16%	387,780	0.22%	329,140	0.16%	642,292	0.31%
Las Heras	895,870	0.66%	1,032,010	0.97%	697,930	0.45%	819,030	0.54%	944,540	0.53%	1,254,230	0.63%	1,308,854	0.64%
Lavalle	12,661,407	9.31%	11,650,163	10.92%	13,480,498	8.78%	15,987,259	10.50%	23,060,000	13.03%	27,757,647	13.87%	30,038,288	14.64%
Lujan	7,778,619	5.72%	5,771,014	5.41%	5,970,386	3.89%	6,030,834	3.96%	5,897,039	3.33%	5,768,591	2.88%	5,304,741	2.59%
Maipu	8,401,342	6.18%	8,791,731	8.24%	12,512,740	8.15%	11,530,215	7.57%	13,877,998	7.84%	17,061,613	8.53%	16,680,806	8.13%
Rivadavia	18,175,656	13.36%	14,589,388	13.68%	21,440,287	13.97%	16,419,397	10.78%	26,798,842	15.14%	27,626,991	13.81%	26,420,136	12.88%
San Carlos	974,320	0.72%	632,800	0.59%	1,152,140	0.75%	1,012,026	0.66%	831,186	0.47%	870,120	0.43%	394,415	0.19%
San Martin	35,991,170	26.46%	30,101,452	28.22%	43,155,631	28.11%	43,584,093	28.62%	48,916,870	27.64%	56,667,676	28.32%	57,273,854	27.92%
San Rafael	11,718,075	8.62%	6,046,194	5.67%	9,239,752	6.02%	14,951,959	9.82%	11,532,121	6.51%	12,926,943	6.46%	18,380,125	8.96%
Santa Rosa	14,128,747	10.39%	9,087,261	8.52%	17,373,483	11.32%	16,261,848	10.68%	13,134,590	7.42%	16,208,363	8.10%	17,798,733	8.68%
Tunuyan	2,168,399	1.59%	1,892,470	1.77%	2,854,266	1.86%	2,217,987	1.46%	2,570,220	1.45%	2,372,801	1.19%	2,184,395	1.06%
Tupungato	11,594,070	8.52%	7,105,107	6.66%	12,135,638	7.90%	10,546,210	6.92%	12,489,542	7.06%	11,851,842	5.92%	10,317,488	5.03%
TOTAL	136,015,418	100%	106,673,422	100%	153,519,442	100%	152,300,953	100%	177,009,758	100%	200,086,424	100%	205,158,301	100%

Diferencias Totales de Cosechas					
Dif.05-99	Dif.05-00	Dif.05-01	Dif.05-02	Dif.05-03	Dif.05-04
33.70%	48.00%	25.17%	25.76%	13.72%	2.47%



BONARDA

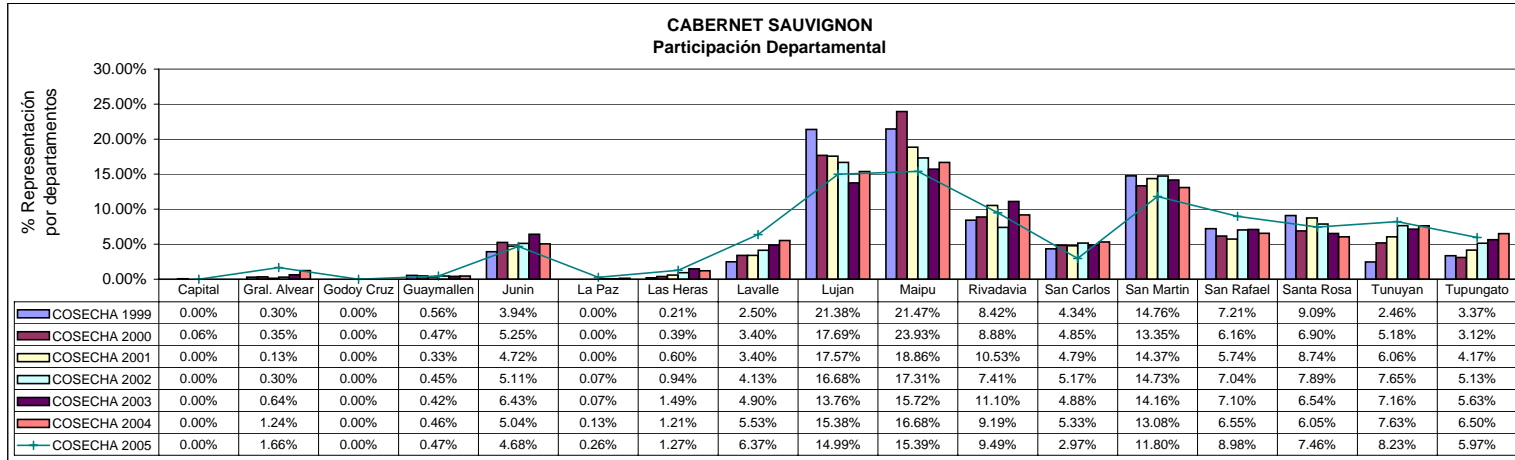
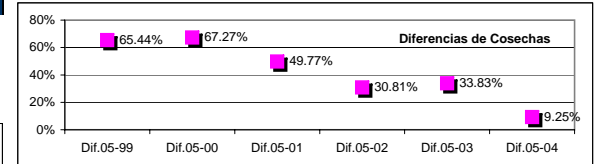
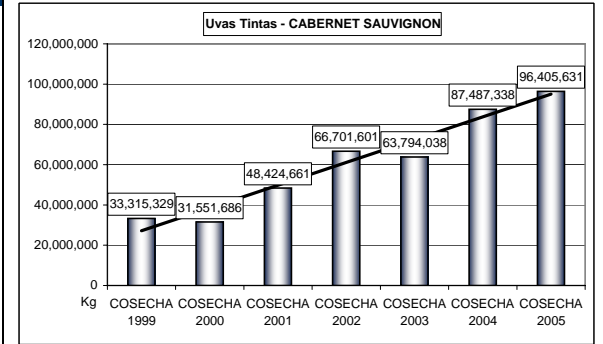
Uvas Tintas

Comparativos Cosecha Años 1999 a 2005

Totales Producidos por Departamentos y Participación en el Total Provincial

DEPARTAMENTOS	COSECHA 1999		COSECHA 2000		COSECHA 2001		COSECHA 2002		COSECHA 2003		COSECHA 2004		COSECHA 2005	
	KG	%V	KG	%V	KG	%V	KG	%V	KG	%V	KG	%V	KG	%V
Capital		0.00%	19,135	0.06%		0.00%		0.00%		0.00%		0.00%		0.00%
Gral. Alvear	100,000	0.30%	110,540	0.35%	65,070	0.13%	197,113	0.30%	408,586	0.64%	1,081,344	1.24%	1,597,013	1.66%
Godoy Cruz		0.00%		0.00%		0.00%		0.00%		0.00%		0.00%		0.00%
Guaymallen	185,800	0.56%	149,861	0.47%	159,215	0.33%	297,640	0.45%	267,730	0.42%	402,390	0.46%	449,710	0.47%
Junin	1,312,060	3.94%	1,657,858	5.25%	2,285,052	4.72%	3,410,749	5.11%	4,101,175	6.43%	4,409,024	5.04%	4,515,046	4.68%
La Paz		0.00%		0.00%		0.00%		0.00%		0.00%		0.13%	254,972	0.26%
Las Heras	71,365	0.21%	121,554	0.39%	288,216	0.60%	626,278	0.94%	949,510	1.49%	1,059,550	1.21%	1,226,305	1.27%
Lavalle	831,401	2.50%	1,072,146	3.40%	1,647,663	3.40%	2,753,802	4.13%	3,126,534	4.90%	4,834,882	5.53%	6,140,413	6.37%
Lujan	7,121,667	21.38%	5,582,997	17.69%	8,507,741	17.57%	11,128,569	16.68%	8,777,481	13.76%	13,458,572	15.38%	14,455,644	14.99%
Maipu	7,151,220	21.47%	7,551,872	23.93%	9,131,435	18.86%	11,546,651	17.31%	10,029,274	15.72%	14,595,133	16.68%	14,837,534	15.39%
Rivadavia	2,805,160	8.42%	2,801,543	8.88%	5,097,579	10.53%	4,941,694	7.41%	7,079,644	11.10%	8,042,533	9.19%	9,148,916	9.49%
San Carlos	1,446,524	4.34%	1,531,707	4.85%	2,317,752	4.79%	3,446,496	5.17%	3,112,787	4.88%	4,659,228	5.33%	2,863,698	2.97%
San Martin	4,916,156	14.76%	4,212,000	13.35%	6,960,407	14.37%	9,823,708	14.73%	9,033,435	14.16%	11,444,139	13.08%	11,378,234	11.80%
San Rafael	2,403,426	7.21%	1,943,240	6.16%	2,777,877	5.74%	4,694,991	7.04%	4,530,231	7.10%	5,730,859	6.55%	8,658,892	8.98%
Santa Rosa	3,028,410	9.09%	2,178,120	6.90%	4,233,427	8.74%	5,261,665	7.89%	4,172,847	6.54%	5,289,313	6.05%	7,189,283	7.46%
Tunuyan	820,776	2.46%	1,635,268	5.18%	2,935,728	6.06%	5,102,236	7.65%	4,568,640	7.16%	6,676,858	7.63%	7,932,707	8.23%
Tupungato	1,121,364	3.37%	983,845	3.12%	2,017,499	4.17%	3,424,739	5.13%	3,593,044	5.63%	5,689,543	6.50%	5,757,264	5.97%
TOTAL	33,315,329	100%	31,551,686	100%	48,424,661	100%	66,701,601	100%	63,794,038	100%	87,487,338	100%	96,405,631	100%

Diferencias Totales de Cosechas					
Dif.05-99	Dif.05-00	Dif.05-01	Dif.05-02	Dif.05-03	Dif.05-04
65.44%	67.27%	49.77%	30.81%	33.83%	9.25%



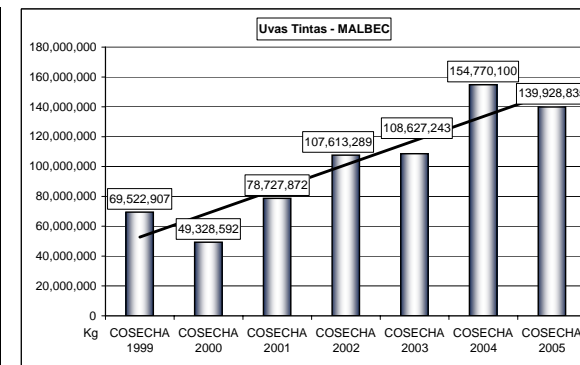
CABERNET SAUVIGNON

Uvas Tintas

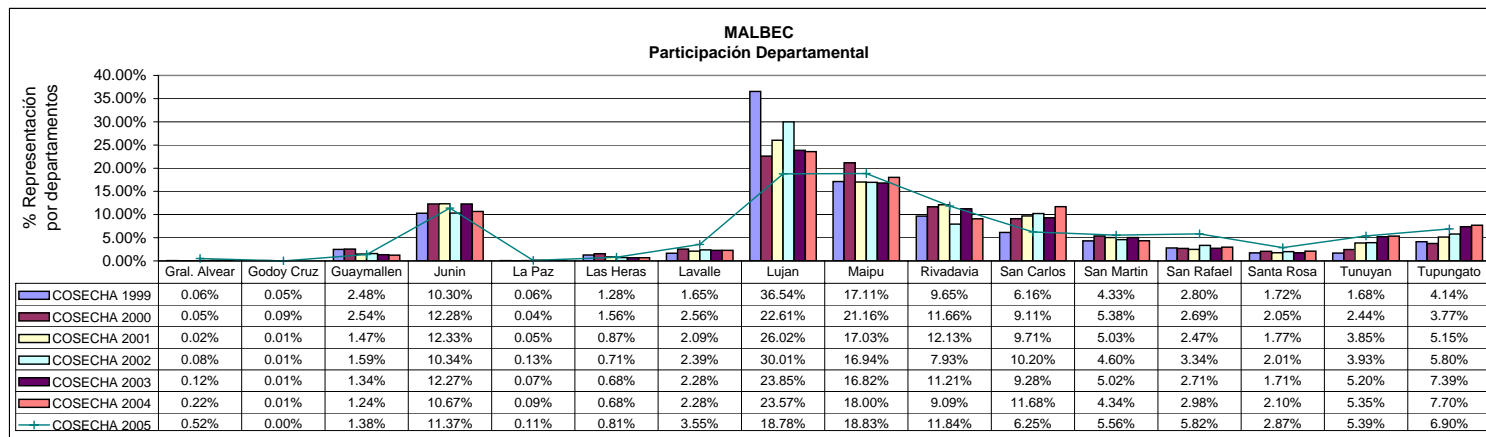
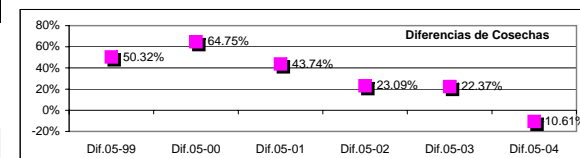
Comparativos Cosecha Años 1999 a 2005

Totales Producidos por Departamentos y Participación en el Total Provincial

DEPARTAMENTOS	COSECHA 1999		COSECHA 2000		COSECHA 2001		COSECHA 2002		COSECHA 2003		COSECHA 2004		COSECHA 2005	
	KG	%V	KG	%V	KG	%V	KG	%V	KG	%V	KG	%V	KG	%V
Gral. Alvear	43,060	0.06%	25,434	0.05%	17,520	0.02%	81,420	0.08%	132,090	0.12%	340,900	0.22%	720,810	0.52%
Godoy Cruz	33,680	0.05%	42,126	0.09%	6,260	0.01%	7,400	0.01%	6,170	0.01%	8,240	0.01%	6,173	0.00%
Guaymallen	1,724,961	2.48%	1,252,641	2.54%	1,158,736	1.47%	1,708,087	1.59%	1,460,610	1.34%	1,915,259	1.24%	1,935,632	1.38%
Junin	7,160,614	10.30%	6,057,614	12.28%	9,708,004	12.33%	11,121,921	10.34%	13,333,821	12.27%	16,517,967	10.67%	15,915,740	11.37%
La Paz	40,600	0.06%	21,820	0.04%	42,770	0.05%	138,760	0.13%	77,790	0.07%	140,960	0.09%	148,850	0.11%
Las Heras	893,000	1.28%	771,204	1.56%	685,116	0.87%	764,158	0.71%	743,140	0.68%	1,059,065	0.68%	1,129,424	0.81%
Lavalle	1,149,876	1.65%	1,262,760	2.56%	1,648,910	2.09%	2,577,330	2.39%	2,481,949	2.28%	3,526,233	2.28%	4,972,064	3.55%
Lujan	25,402,122	36.54%	11,153,420	22.61%	20,485,840	26.02%	32,291,857	30.01%	25,906,998	23.85%	36,471,892	23.57%	26,284,982	18.78%
Maipu	11,895,972	17.11%	10,438,617	21.16%	13,403,521	17.03%	18,228,584	16.94%	18,274,927	16.82%	27,857,549	18.00%	26,349,932	18.83%
Rivadavia	6,707,803	9.65%	5,751,823	11.66%	9,550,217	12.13%	8,535,234	7.93%	12,178,576	11.21%	14,072,258	9.09%	16,571,868	11.84%
San Carlos	4,281,070	6.16%	4,492,811	9.11%	7,641,796	9.71%	10,976,159	10.20%	10,082,809	9.28%	18,083,222	11.68%	8,751,401	6.25%
San Martin	3,007,814	4.33%	2,655,520	5.38%	3,956,917	5.03%	4,954,913	4.60%	5,458,164	5.02%	6,720,046	4.34%	7,785,503	5.56%
San Rafael	1,943,222	2.80%	1,328,530	2.69%	1,943,974	2.47%	3,594,785	3.34%	2,947,380	2.71%	4,616,545	2.98%	8,144,608	5.82%
Santa Rosa	1,198,740	1.72%	1,013,030	2.05%	1,396,150	1.77%	2,166,710	2.01%	1,862,670	1.71%	3,248,220	2.10%	4,015,450	2.87%
Tunuyan	1,164,660	1.68%	1,203,554	2.44%	3,030,716	3.85%	4,228,463	3.93%	5,651,313	5.20%	8,278,305	5.35%	7,543,473	5.39%
Tupungato	2,875,713	4.14%	1,857,688	3.77%	4,051,425	5.15%	6,237,508	5.80%	8,028,836	7.39%	11,913,439	7.70%	9,652,925	6.90%
TOTAL	69,522,907	100%	49,328,592	100%	78,727,872	100%	107,613,289	100%	108,627,243	100%	154,770,100	100%	139,928,835	100%



Diferencias Totales de Cosechas					
Dif.05-99	Dif.05-00	Dif.05-01	Dif.05-02	Dif.05-03	Dif.05-04
50.32%	64.75%	43.74%	23.09%	22.37%	-10.61%



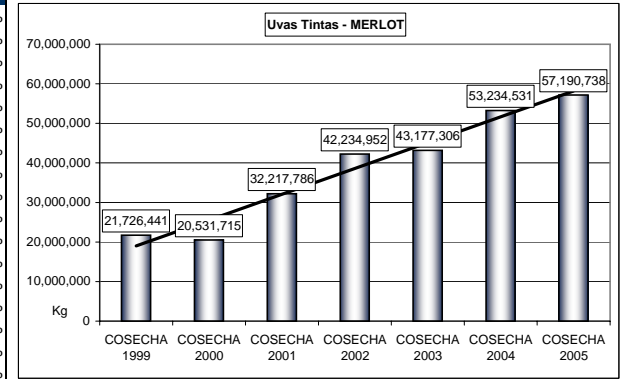
MALBEC

Uvas Tintas

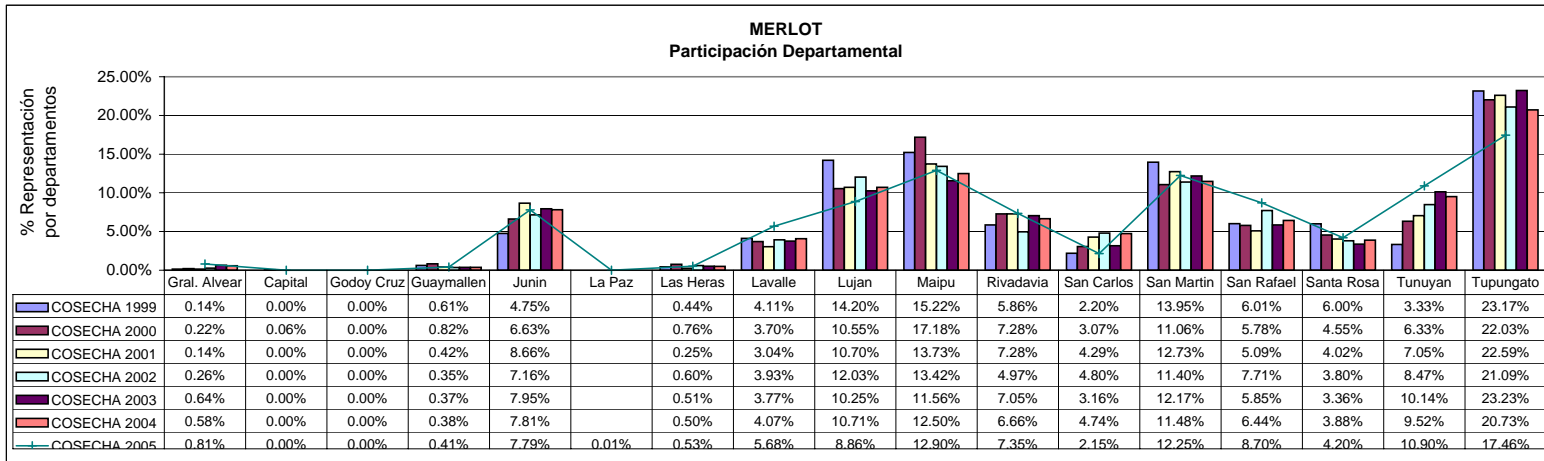
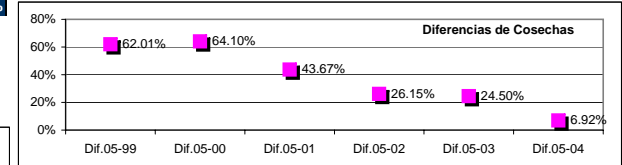
Comparativos Cosecha Años 1999 a 2005

Totales Producidos por Departamentos y Participación en el Total Provincial

DEPARTAMENTOS	COSECHA 1999		COSECHA 2000		COSECHA 2001		COSECHA 2002		COSECHA 2003		COSECHA 2004		COSECHA 2005	
	KG	%V	KG	%V	KG	%V	KG	%V	KG	%V	KG	%V	KG	%V
Gral. Alvear	30,910	0.14%	44,440	0.22%	43,560	0.14%	111,570	0.26%	274,595	0.64%	308,176	0.58%	461,900	0.81%
Capital		0.00%	12,192	0.06%		0.00%		0.00%		0.00%		0.00%		0.00%
Godoy Cruz		0.00%		0.00%		0.00%		0.00%		0.00%		0.00%		0.00%
Guaymallen	133,500	0.61%	169,180	0.82%	136,330	0.42%	149,110	0.35%	159,810	0.37%	200,120	0.38%	234,590	0.41%
Junin	1,031,732	4.75%	1,360,510	6.63%	2,790,581	8.66%	3,024,667	7.16%	3,430,912	7.95%	4,156,594	7.81%	4,456,436	7.79%
La Paz													4,590	0.01%
Las Heras	96,050	0.44%	155,430	0.76%	80,390	0.25%	253,130	0.60%	218,920	0.51%	267,180	0.50%	301,330	0.53%
Lavalle	893,000	4.11%	758,704	3.70%	978,148	3.04%	1,659,190	3.93%	1,627,870	3.77%	2,168,347	4.07%	3,247,000	5.68%
Lujan	3,086,180	14.20%	2,165,871	10.55%	3,448,397	10.70%	5,082,610	12.03%	4,426,740	10.25%	5,702,834	10.71%	5,067,521	8.86%
Maipu	3,307,785	15.22%	3,526,510	17.18%	4,423,539	13.73%	5,666,885	13.42%	4,991,512	11.56%	6,653,689	12.50%	7,379,692	12.90%
Rivadavia	1,273,318	5.86%	1,494,555	7.28%	2,343,850	7.28%	2,099,731	4.97%	3,042,975	7.05%	3,546,188	6.66%	4,203,490	7.35%
San Carlos	477,400	2.20%	629,670	3.07%	1,381,787	4.29%	2,028,909	4.80%	1,366,135	3.16%	2,525,815	4.74%	1,231,767	2.15%
San Martin	3,031,150	13.95%	2,269,885	11.06%	4,102,395	12.73%	4,814,566	11.40%	5,255,607	12.17%	6,111,117	11.48%	7,006,200	12.25%
San Rafael	1,305,568	6.01%	1,187,230	5.78%	1,641,270	5.09%	3,257,915	7.71%	2,525,607	5.85%	3,426,935	6.44%	4,975,403	8.70%
Santa Rosa	1,303,720	6.00%	935,050	4.55%	1,296,765	4.02%	1,603,600	3.80%	1,451,269	3.36%	2,064,545	3.88%	2,403,208	4.20%
Tunuyan	722,933	3.33%	1,300,077	6.33%	2,271,875	7.05%	3,576,872	8.47%	4,377,332	10.14%	5,069,167	9.52%	6,233,677	10.90%
Tupungato	5,033,195	23.17%	4,522,411	22.03%	7,278,899	22.59%	8,906,197	21.09%	10,028,022	23.23%	11,033,824	20.73%	9,983,934	17.46%
TOTAL	21,726,441	100%	20,531,715	100%	32,217,786	100%	42,234,952	100%	43,177,306	100%	53,234,531	100%	57,190,738	100%



Diferencias Totales de Cosechas					
Dif.05-99	Dif.05-00	Dif.05-01	Dif.05-02	Dif.05-03	Dif.05-04
62.01%	64.10%	43.67%	26.15%	24.50%	6.92%



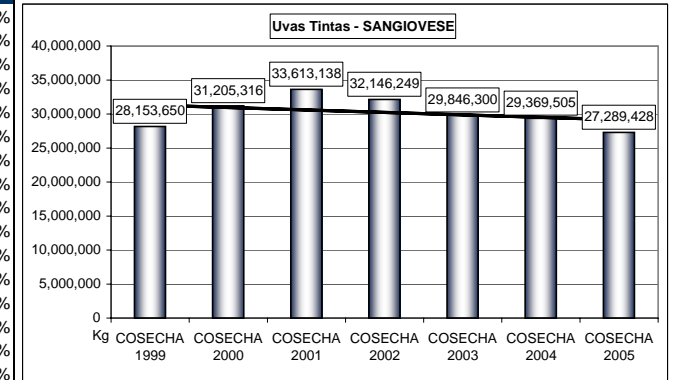
MERLOT

Uvas Tintas

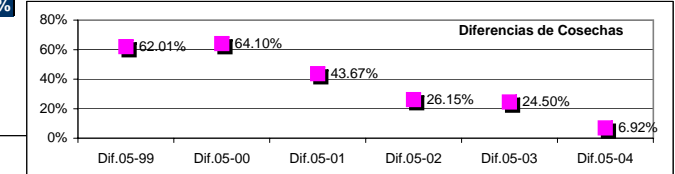
Comparativos Cosecha Años 1999 a 2005

Totales Producidos por Departamentos y Participación en el Total Provincial

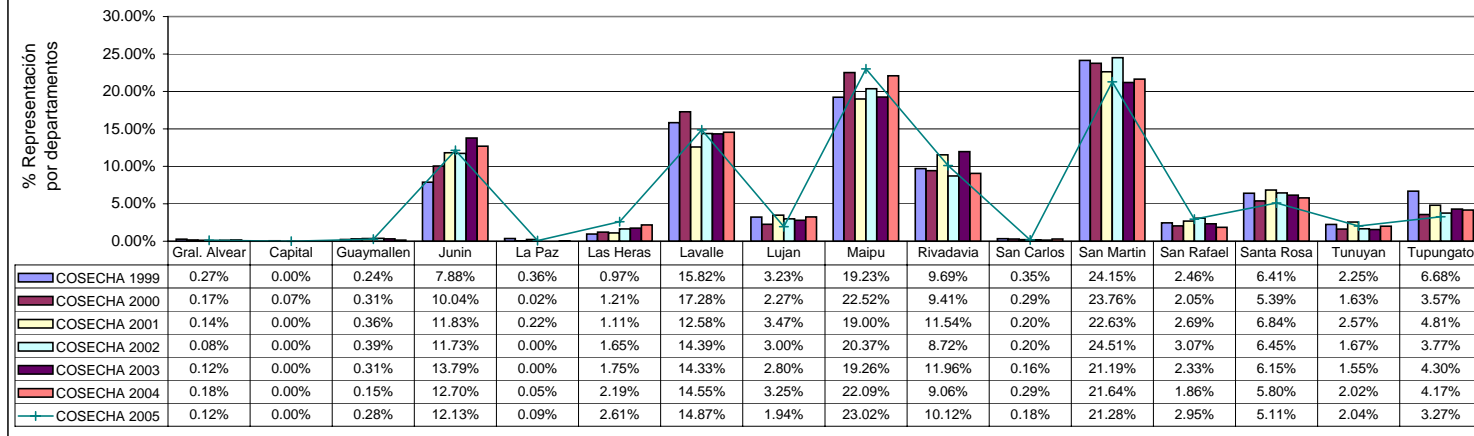
DEPARTAMENTOS	COSECHA 1999		COSECHA 2000		COSECHA 2001		COSECHA 2002		COSECHA 2003		COSECHA 2004		COSECHA 2005	
	KG	%V	KG	%V	KG	%V	KG	%V	KG	%V	KG	%V	KG	%V
Gral. Alvear	76,340	0.27%	53,620	0.17%	46,490	0.14%	25,290	0.08%	35,150	0.12%	52,680	0.18%	32,300	0.12%
Capital		0.00%	20,917	0.07%		0.00%		0.00%		0.00%		0.00%		0.00%
Guaymallen	68,720	0.24%	97,630	0.31%	121,720	0.36%	126,110	0.39%	93,240	0.31%	44,150	0.15%	75,640	0.28%
Junin	2,219,359	7.88%	3,133,158	10.04%	3,975,150	11.83%	3,771,603	11.73%	4,115,424	13.79%	3,729,949	12.70%	3,309,788	12.13%
La Paz	100,790	0.36%	6,100	0.02%	75,500	0.22%		0.00%	13,730	0.05%	25,890	0.09%	25,890	0.09%
Las Heras	271,740	0.97%	377,155	1.21%	371,520	1.11%	530,670	1.65%	521,250	1.75%	643,190	2.19%	711,390	2.61%
Lavalle	4,454,770	15.82%	5,392,079	17.28%	4,228,335	12.58%	4,624,693	14.39%	4,276,230	14.33%	4,274,687	14.55%	4,057,620	14.87%
Lujan	910,640	3.23%	709,560	2.27%	1,167,302	3.47%	963,602	3.00%	834,986	2.80%	953,354	3.25%	530,400	1.94%
Maipu	5,413,300	19.23%	7,027,815	22.52%	6,386,754	19.00%	6,548,250	20.37%	5,748,657	19.26%	6,489,119	22.09%	6,281,556	23.02%
Rivadavia	2,728,855	9.69%	2,937,441	9.41%	3,879,190	11.54%	2,804,587	8.72%	3,569,960	11.96%	2,661,779	9.06%	2,761,003	10.12%
San Carlos	98,800	0.35%	90,190	0.29%	68,640	0.20%	64,250	0.20%	47,826	0.16%	85,622	0.29%	48,980	0.18%
San Martin	6,799,821	24.15%	7,414,986	23.76%	7,608,248	22.63%	7,877,895	24.51%	6,324,673	21.19%	6,354,431	21.64%	5,806,686	21.28%
San Rafael	693,019	2.46%	639,035	2.05%	905,000	2.69%	987,189	3.07%	695,844	2.33%	547,017	1.86%	805,290	2.95%
Santa Rosa	1,804,596	6.41%	1,682,280	5.39%	2,300,739	6.84%	2,072,830	6.45%	1,836,440	6.15%	1,702,045	5.80%	1,394,537	5.11%
Tunuyan	632,750	2.25%	509,910	1.63%	862,910	2.57%	537,620	1.67%	462,470	1.55%	592,390	2.02%	556,708	2.04%
Tupungato	1,880,150	6.68%	1,113,440	3.57%	1,615,640	4.81%	1,211,660	3.77%	1,284,150	4.30%	1,225,362	4.17%	891,640	3.27%
TOTAL	28,153,650	100%	31,205,316	100%	33,613,138	100%	32,146,249	100%	29,846,300	100%	29,369,505	100%	27,289,428	100%



Diferencias Totales de Cosechas					
Dif.05-99	Dif.05-00	Dif.05-01	Dif.05-02	Dif.05-03	Dif.05-04
-3.17%	-14.35%	-23.17%	-17.80%	-9.37%	-7.62%



SANGIOVESE Participación Departamental



SANGIOVESE

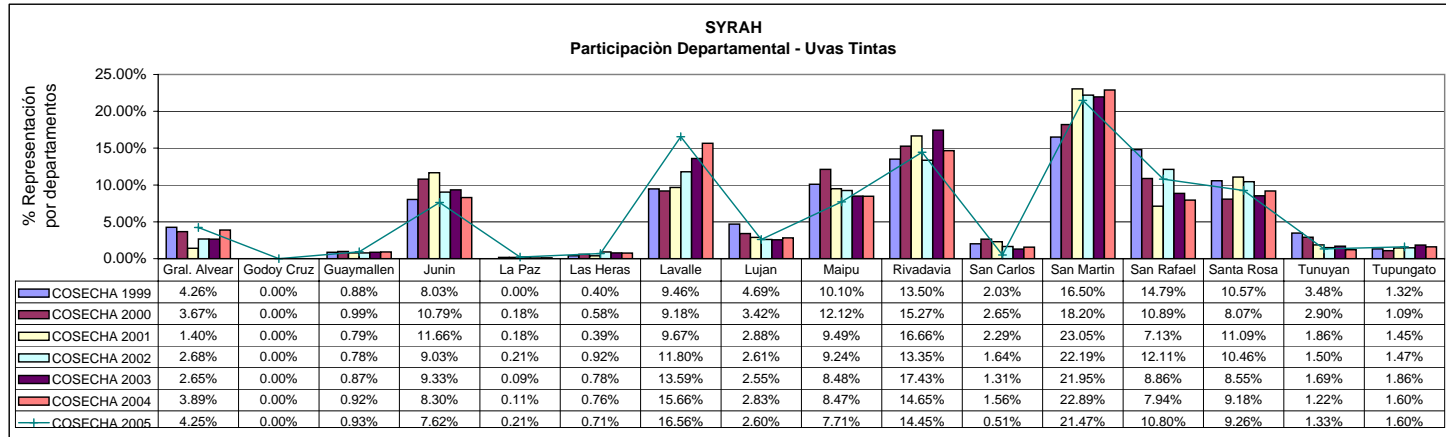
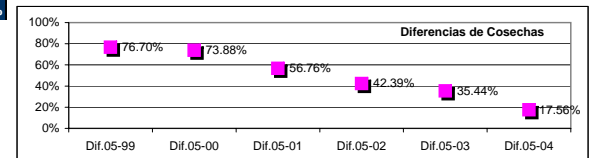
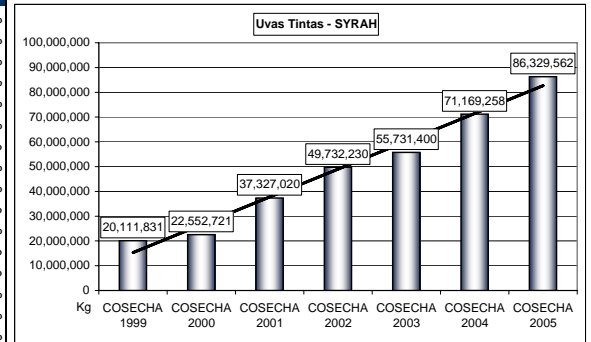
Uvas Tintas

Comparativos Cosecha Años 1999 a 2005

Totales Producidos por Departamentos y Participación en el Total Provincial

DEPARTAMENTOS	COSECHA 1999		COSECHA 2000		COSECHA 2001		COSECHA 2002		COSECHA 2003		COSECHA 2004		COSECHA 2005	
	KG	%V	KG	%V	KG	%V	KG	%V	KG	%V	KG	%V	KG	%V
Gral. Alvear	855,820	4.26%	827,345	3.67%	523,050	1.40%	1,332,995	2.68%	1,477,110	2.65%	2,771,445	3.89%	3,665,365	4.25%
Godoy Cruz		0.00%		0.00%		0.00%		0.00%		0.00%		0.00%		0.00%
Guaymallen	176,310	0.88%	222,610	0.99%	294,360	0.79%	388,717	0.78%	483,784	0.87%	655,034	0.92%	805,905	0.93%
Junin	1,615,820	8.03%	2,434,236	10.79%	4,351,860	11.66%	4,490,085	9.03%	5,201,393	9.33%	5,910,127	8.30%	6,580,254	7.62%
La Paz		0.00%	39,510	0.18%	68,810	0.18%	105,580	0.21%	52,670	0.09%	80,210	0.11%	179,380	0.21%
Las Heras	80,270	0.40%	130,316	0.58%	146,640	0.39%	455,068	0.92%	435,200	0.78%	542,800	0.76%	608,977	0.71%
Lavalle	1,903,120	9.46%	2,070,104	9.18%	3,609,870	9.67%	5,867,701	11.80%	7,576,149	13.59%	11,143,489	15.66%	14,295,376	16.56%
Lujan	943,482	4.69%	771,041	3.42%	1,076,099	2.88%	1,299,825	2.61%	1,423,556	2.55%	2,015,478	2.83%	2,242,074	2.60%
Maipu	2,030,371	10.10%	2,734,066	12.12%	3,542,371	9.49%	4,597,284	9.24%	4,727,295	8.48%	6,025,791	8.47%	6,653,255	7.71%
Rivadavia	2,715,260	13.50%	3,444,847	15.27%	6,216,970	16.66%	6,638,289	13.35%	9,715,542	17.43%	10,429,463	14.65%	12,470,846	14.45%
San Carlos	408,160	2.03%	598,070	2.65%	856,234	2.29%	816,737	1.64%	728,493	1.31%	1,111,518	1.56%	436,482	0.51%
San Martin	3,318,185	16.50%	4,105,392	18.20%	8,603,373	23.05%	11,037,571	22.19%	12,235,564	21.95%	16,292,482	22.89%	18,537,052	21.47%
San Rafael	2,973,943	14.79%	2,455,414	10.89%	2,663,029	7.13%	6,024,647	12.11%	4,936,480	8.86%	5,651,394	7.94%	9,327,301	10.80%
Santa Rosa	2,125,660	10.57%	1,820,120	8.07%	4,138,692	11.09%	5,200,631	10.46%	4,763,020	8.55%	6,531,343	9.18%	7,997,155	9.26%
Tunuyan	699,830	3.48%	654,410	2.90%	693,378	1.86%	746,381	1.50%	940,271	1.69%	870,908	1.22%	1,146,601	1.33%
Tupungato	265,600	1.32%	245,240	1.09%	542,284	1.45%	730,719	1.47%	1,034,873	1.86%	1,137,776	1.60%	1,383,539	1.60%
TOTAL	20,111,831	100%	22,552,721	100%	37,327,020	100%	49,732,230	100%	55,731,400	100%	71,169,258	100%	86,329,562	100%

Diferencias Totales de Cosechas					
Dif.05-99	Dif.05-00	Dif.05-01	Dif.05-02	Dif.05-03	Dif.05-04
76.70%	73.88%	56.76%	42.39%	35.44%	17.56%



SYRAH

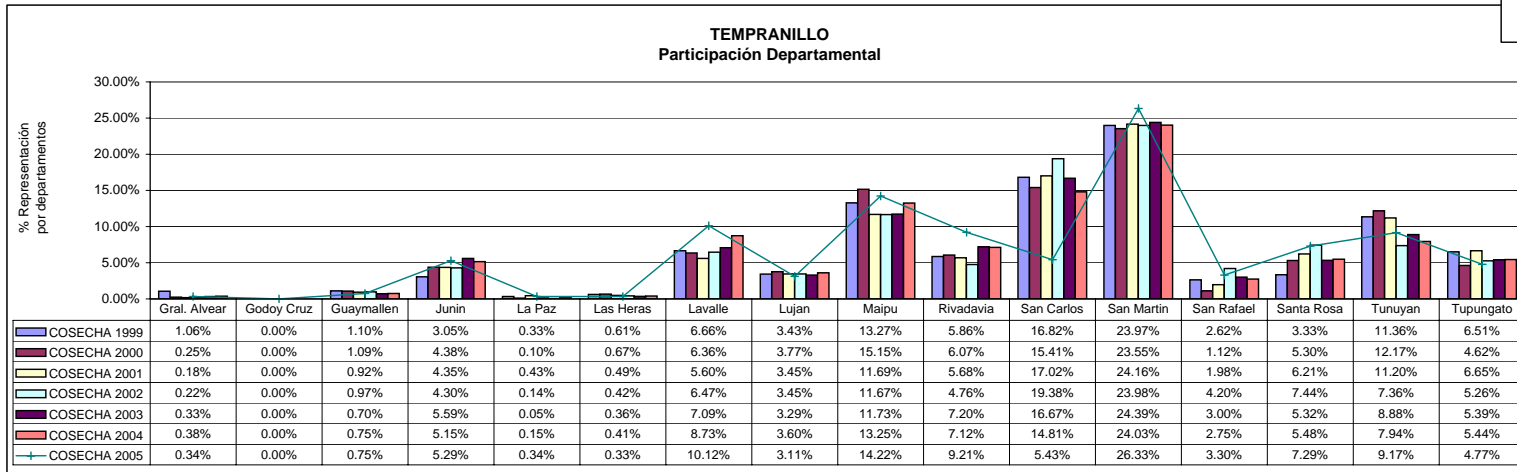
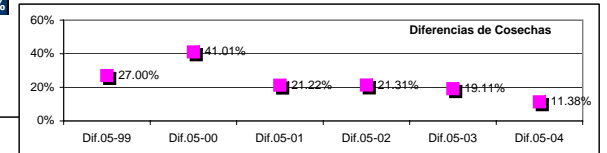
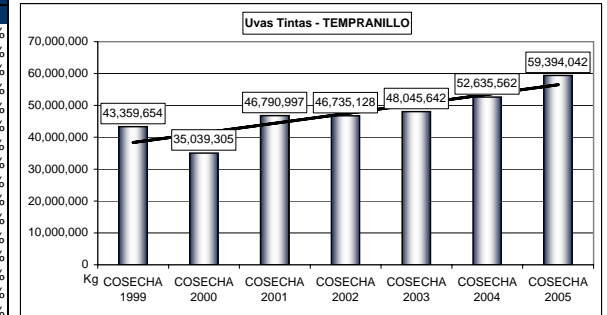
Uvas Tintas

Comparativos Cosecha 2005 - 2004 - 2003 - 2002 - 2001 - 2000 - 1999

Totales Producidos por Departamentos y Participación en el Total Provincial

DEPARTAMENTOS	COSECHA 1999		COSECHA 2000		COSECHA 2001		COSECHA 2002		COSECHA 2003		COSECHA 2004		COSECHA 2005	
	KG	%V	KG	%V	KG	%V	KG	%V	KG	%V	KG	%V	KG	%V
Gral. Alvear	459,568	1.06%	86,800	0.25%	83,590	0.18%	101,550	0.22%	156,810	0.33%	197,430	0.38%	202,960	0.34%
Godoy Cruz		0.00%		0.00%		0.00%		0.00%		0.00%		0.00%		0.00%
Guaymallen	478,998	1.10%	380,710	1.09%	432,401	0.92%	451,578	0.97%	336,240	0.70%	395,658	0.75%	444,730	0.75%
Junin	1,323,263	3.05%	1,536,145	4.38%	2,034,360	4.35%	2,008,313	4.30%	2,685,930	5.59%	2,710,325	5.15%	3,142,770	5.29%
La Paz	143,320	0.33%	36,330	0.10%	202,460	0.43%	65,830	0.14%	23,050	0.05%	79,440	0.15%	203,020	0.34%
Las Heras	266,550	0.61%	233,705	0.67%	231,540	0.49%	197,920	0.42%	173,040	0.36%	215,070	0.41%	197,120	0.33%
Lavalle	2,889,274	6.66%	2,228,580	6.36%	2,619,880	5.60%	3,023,166	6.47%	3,405,625	7.09%	4,596,455	8.73%	6,008,510	10.12%
Lujan	1,488,527	3.43%	1,321,080	3.77%	1,612,262	3.45%	1,610,986	3.45%	1,579,808	3.29%	1,897,494	3.60%	1,846,526	3.11%
Maipu	5,752,127	13.27%	5,309,970	15.15%	5,467,943	11.69%	5,452,386	11.67%	5,637,870	11.73%	6,975,414	13.25%	8,445,169	14.22%
Rivadavia	2,541,445	5.86%	2,127,775	6.07%	2,656,104	5.68%	2,223,865	4.76%	3,458,335	7.20%	3,745,816	7.12%	5,472,164	9.21%
San Carlos	7,292,807	16.82%	5,398,210	15.41%	7,963,658	17.02%	9,056,014	19.38%	8,010,944	16.67%	7,796,087	14.81%	3,224,919	5.43%
San Martin	10,393,937	23.97%	8,250,095	23.55%	11,302,452	24.16%	11,207,889	23.98%	11,720,510	24.39%	12,648,506	24.03%	15,635,872	26.33%
San Rafael	1,137,120	2.62%	391,430	1.12%	925,108	1.98%	1,963,875	4.20%	1,441,618	3.00%	1,449,540	2.75%	1,959,570	3.30%
Santa Rosa	1,444,900	3.33%	1,856,910	5.30%	2,905,760	6.21%	3,476,110	7.44%	2,558,140	5.32%	2,884,164	5.48%	4,330,063	7.29%
Tunuyan	4,925,360	11.36%	4,262,958	12.17%	5,240,100	11.20%	3,437,976	7.36%	4,268,682	8.88%	4,181,391	7.94%	5,446,231	9.17%
Tupungato	2,822,458	6.51%	1,618,607	4.62%	3,113,379	6.65%	2,457,670	5.26%	2,589,040	5.39%	2,862,772	5.44%	2,834,418	4.77%
TOTAL	43,359,654	100%	35,039,305	100%	46,790,997	100%	46,735,128	100%	48,045,642	100%	52,635,562	100%	59,394,042	100%

Diferencias Totales de Cosechas					
Dif.05-99	Dif.05-00	Dif.05-01	Dif.05-02	Dif.05-03	Dif.05-04
27.00%	41.01%	21.22%	21.31%	19.11%	11.38%



TEMPRANILLO

Uvas Tintas

Comparativos Cosecha Años 1999 a 2005

Totales Producidos por Departamentos y Participación en el Total Provincial